

# ST JOHN'S PRIMARY SCHOOL, BARRHEAD

SCHOOL TRAVEL PLAN  
VOLUME 1 - MAY 2010



## **INTRODUCTION**

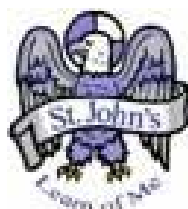
The way we travel has a huge impact on our economy, health, environment, and the resources available for future generations. In 2007 road transport in Scotland accounted for approximately 25% of Scotland's carbon dioxide emissions. The transport sector also generates other environmental impacts like airborne and waterborne pollutants. For these reasons it is easy to understand why encouraging more efficient, convenient and sustainable travel is important.

It is estimated that one-fifth of all vehicles on our roads at 08.50am are involved in school travel and of course, the challenge is to put sustainable transport measures into practice - for example; by providing the information, support and infrastructure to help those travelling to and from school to choose to walk, cycle, take public transport, or trip share more often than they currently do.

## **ST JOHN'S PRIMARY SCHOOL**

St John's Primary School is a denominational primary school run by East Renfrewshire Council. The school teaches Primary 1-7 pupils from age 5-11. The school catchment takes in approximately 210 pupils and St John's is a feeder school for St Luke's High School.

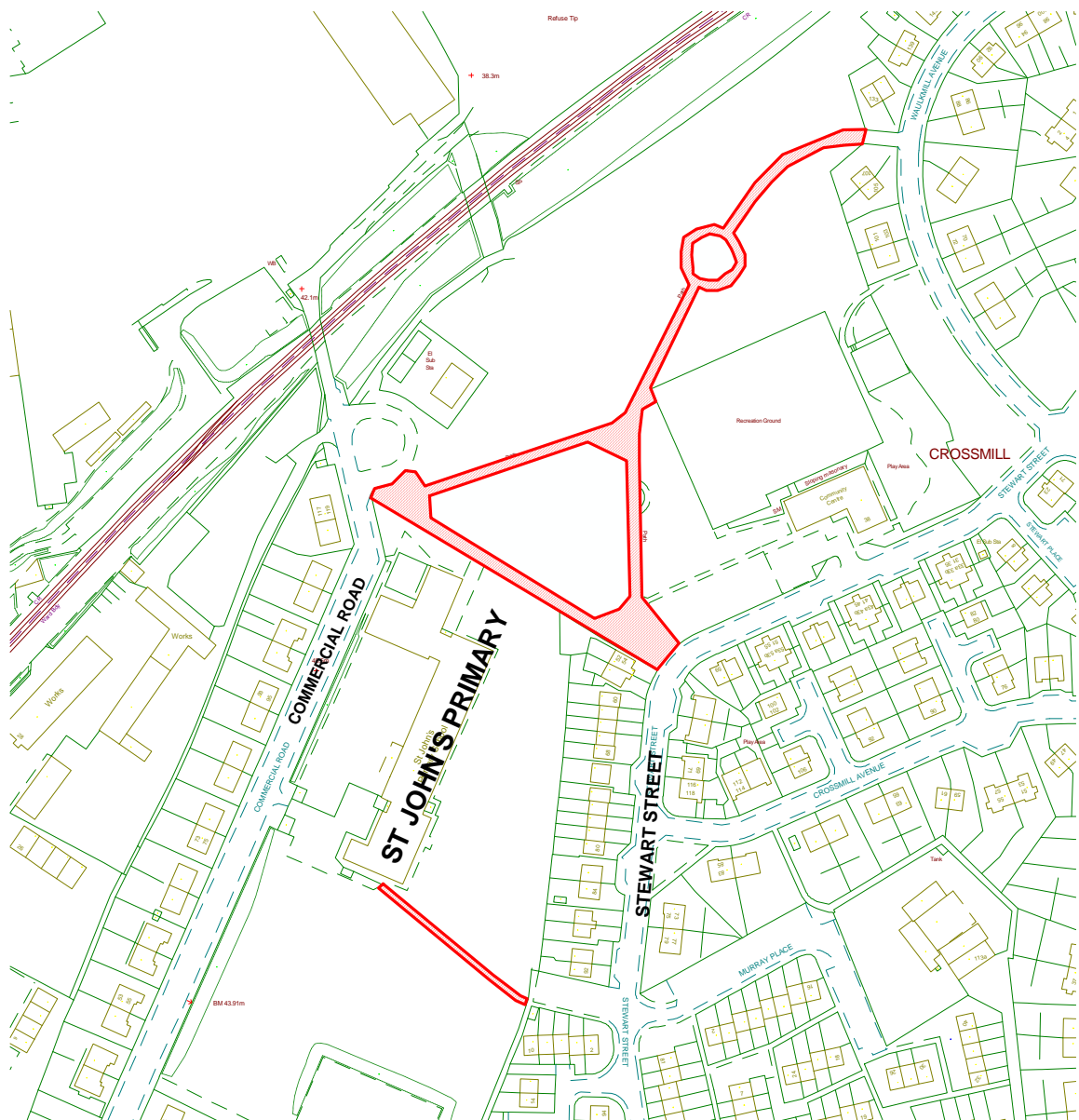
St John's have a strong Eco Schools committee which is very popular amongst pupils and the school is working towards its 4<sup>th</sup> Green Flag award. The school has an 'Active Schools Coordinator', Kirsteen Torrance, whose role it is to encourage and support opportunities for pupils to take part in regular physical activity. Initiatives at the school are supported by an active Parent Council which meets monthly.



## ACCESS TO SCHOOL

St John's Primary School can be accessed on foot, by bicycle, bus and by car, or by a combination of these modes or transport. There is a breakfast club which is available from 8:30am and supervised arrival in the playground starts at 8:45. (IS THIS CORRECT?)

Pedestrian provision within Barrhead and in the immediate vicinity of St John's Primary School is generally good. Local streets are well lit and have well maintained pedestrian footways. There are local off road footpaths which provide convenient routes to school:- see map below.



A school crossing patroller currently operates on the traffic calmed Carlibar Road at its junction with Commercial Road. A zebra crossing further assists pedestrians at this location.

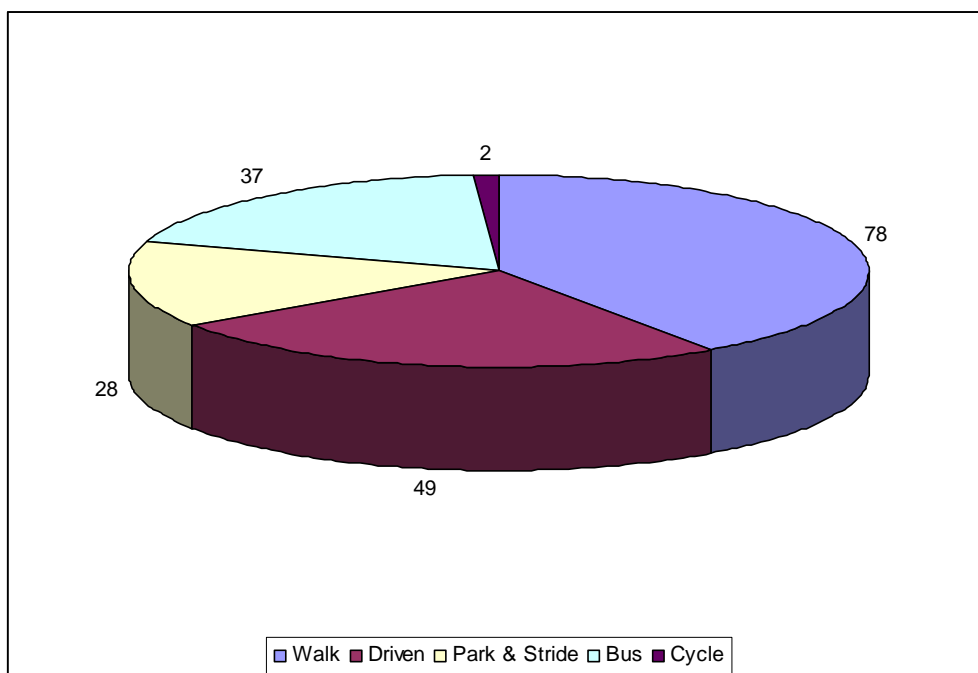
St Johns aims to support pupils to lead healthy lifestyles and to encourage them to walk at least part of the way to school as often as possible. This will reduce congestion outside the school gates and improve pupils fitness levels.

### IDENTIFYING TRAVEL TRENDS

In September 2009 St John's Primary pupils completed the annual 'National Hands Up Survey' on school travel trends. Below is a brief summary of the main findings of the survey:-

The pupils were asked how they currently travel to / from school and the results are as follows:- of the respondents currently 49 (25%) pupils are currently driven to school, 78 (40%) pupils currently walk to school, 28 (14%) park & stride, 37 (19%) pupils are bussed to school. Currently 2 pupils cycle and scooter to school.

This data will be used as base figures to set targets and objectives for the travel plan. The annual school travel 'Hands Up Survey' will be used to monitor changes in travel patterns.



## Aims of the St Johns Primary School Travel Plan

- To improve pedestrian safety in and around the school.
- To encourage more pupils to walk at least part of the way to school.
- To discourage indiscriminate parking practice around the school.
- To raise awareness amongst pupils, parents and staff of the wider health and environmental problems associated with increased car use and of the health benefits of walking, and cycling to school.
- To ensure those pupils, parents and staff are supported and encouraged to make positive, healthy travel choices.
- To improve the local environment for everyone by reducing pollution, congestion and addressing safety issues around the school.
- To ensure parents are aware of, and adhere to, St Johns Primary's School Travel Policy.

## St Johns Primary - School Travel Policy

- St Johns Primary would like to reduce levels of car emissions around the school. Parents who drive to school are encouraged to switch off their engines whilst waiting for pupils.
- Park and Stride:- Older pupils are expected to walk at least part of the way to school to reduce congestion around the school gates. There are several traffic free footpaths around the school that can be used for this.
- Parents are encouraged not to park on footways, as this can be dangerous for pupils walking on footways. Parking close to the school also restricts visibility for pupils crossing the road.



## Proposals to Improve Road Safety

- A zebra crossing has recently been installed on Carlibar Road at its junction with Commercial Road. This facility, coupled with the School Crossing Patroller greatly assists the pedestrian at this location. Carlibar Road has also recently been traffic calmed.
- A part-time 20mph speed limit has been installed on Commercial Road. The reduction in the speed limit from 30mph to 20mph will apply when pupils are either going to or returning from school.
- The school is currently looking at setting up a walking bus. A walking bus can increase levels of walking to school and, in turn, reduce traffic congestion around the school gates.
- Pupils to design banners to hang from the school railings and posters to remind parents to park responsibly.
- 'Park and Stride' - Parents who drive to school are encouraged to drop pupils off remote from the school to reduce congestion levels around the school gates (improving road safety for other pedestrians) and to improve the fitness of the children.
- A new cycle shelter has recently been installed.
- The Council is looking to secure funding to upgrade and widen the footpath at the rear of the school.



## Summary of Objectives and Proposals

Objectives	How	By When	Who
Increase and maintain number of pupils passing Scottish Cycle Training Scheme to over 75%.	* Active Schools Co-ordinators, teachers and parent helpers will assist pupils with training prior to examination.	Ongoing	Kirsteen Torrance - Active School Co-ordinator (ASC)
	* Improve trainer to pupil ratio.	Ongoing	Teacher and Parent helpers
	* Consider undertaking 'Cycle Skills' training for P5 pupils.	Ongoing	Teachers, Pupils, ASC
	<b>Cost:-</b> N/A		
To encourage an improvement in the number of pupils walking to and from school. Target 50% by September 2012.	* Look to set up a 'walking bus' to serve school.	Ongoing	Marion Johnson - Principal Teacher
	* Identify 'Park & Stride' drop-off and collection zones.	Ongoing	Greg Brown - Schools Travel Co-ordinator (STC), Pupils, Teachers
	* Whole school take part in 'Walk to School' week events.	Twice annually (May and October).	STC, Pupils
	* Look to re-launch 'Go For It' active travel reward scheme.	Ongoing	Kirsteen Torrance (ASC), Greg Brown (STC), Pupils
	<b>Cost:-</b> To be met by East Renfrewshire Council		

Objectives	How	By When	Who
To improve road safety around school.	* Ensure all parents and pupils are aware of the schools Road Safety Code.	Ongoing	J.R.S.O's to create and update school notice board on Active Travel / Road Safety
	<b>Cost:-</b> To be met by East Renfrewshire Council		
To encourage pupil, parent and teacher awareness of road safety and safe travel to and from school.	* Develop school policy and programme of study for P1 to 7 on road safety, establishing link with Health Promoting School and Eco-School projects.	Ongoing	Whole School
	* Continue to support 'Junior Road Safety Officer' scheme.	Ongoing	STC
	* Whole school 'Health Promotion Week'.	Ongoing	Whole School
	<b>Cost:-</b> To be met by East Renfrewshire Council		
To reduce level of traffic congestion around school at the beginning and end of the school day.	* Encourage Park & Stride	Ongoing	Whole School
	* Look to re-launch 'Go For It!!' active travel scheme.	Ongoing	ASC, STC
	<b>Cost:-</b> To be met by East Renfrewshire Council		



Objectives	How	By When	Who
Encourage an increase in the numbers of pupils cycling to school	* Install new cycle shelters.	Completed	Greg Brown (STC)
	* Work towards 'Cycle Friendly Schools' award.	Ongoing	School to register on-line
	* Change to P6 for cycle proficiency	Completed	Teachers, Trainers
	* Deliver on-road training <b>Cost:</b> - To be met by East Renfrewshire Council	2010	STC, Teachers, Pupil's, Volunteers
Raise awareness of sustainable travel initiatives and promote new ideas from the pupils.	* Create a section on school notice board for school-travel issues.		J.R.S.O's
	* Start up a school travel suggestion box.		J.R.S.O's
	<b>Cost:</b> - N/A		
Park and Stride	* Identify locations where pupils can be dropped off to walk remainder of way.	Ongoing	ASC, STC
	<b>Cost:</b> - N/A		

## Evaluation and Monitoring

- Results obtained from the annual "Hands Up Survey" each September on travel behaviour will be used to monitor changes in travel patterns. It is envisaged that works undertaken as described in the travel plan will increase levels of walking and cycling.
- Following each annual survey, a meeting should take place between all interested parties to identify where actions have been completed and the impact of these in meeting targets. If a target is not met, the school will review that section of the plan and revise it if necessary.

