

EAST RENFREWSHIRE COUNCILCABINET1 December 2016Report by Director of EnvironmentEAST RENFREWSHIRE COUNCIL CLIMATE CHANGE REPORT 2015/16**PURPOSE OF REPORT**

1. The purpose of this report is to ask the Cabinet to approve the Council's 2015/16 climate change report, for submission to Scottish Ministers.

RECOMMENDATIONS

2. The Cabinet is asked to approve the Council's 2015/16 climate change report for submission to Scottish Ministers.

BACKGROUND

3. The 2009 Climate Change (Scotland) Act placed a range of duties on public bodies, including local authorities, to take action to mitigate against the impact of climate change.

4. Subsequently, the Climate Change (Duties of Public Bodies: Reporting Requirements) (Scotland) Order 2015 came into force on 23 November 2015.

5. This Statutory Instrument places a duty on public bodies to prepare a report, annually, in relation to compliance with the climate change duties.

6. The Order prescribes the format in which report should be prepared.

REPORT

7. Mandatory reporting arrangements offer the Council an opportunity to reflect upon its work in relation to climate change over the course of any year. Reporting also gives an opportunity to learn from other public bodies in relation to best practice.

8. A copy of the Council's Climate Change report covering the period 2015/16, which has been prepared in accordance with the terms of the legislation, is attached as an Appendix to this report.

9. 2015/16 is the first year of mandatory reporting and has been used as a year to transition towards the requirements of the new mandatory reporting arrangements. The Council's existing Environmental Sustainability Strategy and Action Plan is due to be updated during 2017/18, and this gives the Council the opportunity to align climate change reporting with the new requirements as now set out within the Public Sector Climate Change Duties reporting arrangements.

10. The 2015/16 report demonstrates that good progress is being made in terms of climate change mitigation. The Cabinet is reminded that East Renfrewshire Council was 1 of only 2 Scottish councils to meet their Carbon Management Plan target and during the 5 year plan period the Council achieved a 26.6% reduction in Council-controlled carbon emissions.

11. This good progress has continued during 2015/16, and over the year the Council managed to achieve a further reduction of 2.9% in carbon emissions against a 2.5% target.

12. Work continues to implement of a range projects during 2016/17 and 2017/18 which will have a further positive impact upon climate change mitigation and carbon reduction.

13. The Cabinet is also asked to note the breadth of communication coverage undertaken during the year under the "Think Green" campaign banner, both internally and externally, and the close links which have been established between the Local Development Plan and climate change.

FINANCE AND EFFICIENCY

14. There are no financial implications arising directly from this report. Climate change activity undertaken during the course of 2015/16 has been undertaken within approved capital and revenue resources.

CONSULTATION AND PARTNERSHIP WORKING

15. This report has been prepared in full consultation with stakeholders from across all Council Departments.

IMPLICATIONS OF THE PROPOSALS

16. There are no equalities, IT or staffing implications associated with this report. The Council's 2015/16 Climate Change report demonstrates the actions taken over the course of the year to mitigate against the impact of climate change and to contribute towards a more sustainable environment.

CONCLUSIONS

17. In terms of climate change mitigation, the report demonstrates that East Renfrewshire Council continues to perform well. A priority during 2017/18 will be to ensure that internal reporting arrangements / methodology in relation to environmental sustainability reporting take account of the new arrangements required by the new legislation. These changes will be incorporated into the revised Environmental Sustainability Strategy and Action Plan as an action to be undertaken during 2017/18.

RECOMMENDATIONS

18. The Cabinet is asked to approve the Council's 2015/16 climate change report for submission to Scottish Ministers.

Director of Environment

Convener contact details:

Councillor Vincent Waters
(Convener for Environment)

Mobile: 07703 887170
Office: 0141 577 3107/8

November 2016

BLANK PAGE

TABLE OF CONTENTS

Required

PART 1: PROFILE OF REPORTING BODY

PART 2: GOVERNANCE, MANAGEMENT AND STRATEGY

PART 3: EMISSIONS, TARGETS AND PROJECTS

PART 4: ADAPTATION

PART 5: PROCUREMENT

PART 6: VALIDATION AND DECLARATION

Recommended Reporting: Reporting on Wider Influence

RECOMMENDED – WIDER INFLUENCE

OTHER NOTABLE REPORTABLE ACTIVITY

BLANK PAGE

PART 1: PROFILE OF REPORTING BODY

1(a) Name of reporting body
 East Renfrewshire Council

1(b) Type of body
 Local Government

1(c) Highest number of full-time equivalent staff in the body during the report year
 3819

1(d) Metrics used by the body
 Specify the metrics that the body uses to assess its performance in relation to climate change and sustainability.

Metric	Unit	Value	Comments
			The Council is not currently using the carbon footprinting methodology required to satisfy all requirements within the Public Sector Climate Change Duties Report Template, which means effective and meaningful comparison between years is not currently possible. Please refer to Q2f Top 5.

1(e) Overall budget of the body
 Specify approximate £/annum for the report year.

Budget	Budget Comments
	Taken from annual accounts fy 15/16

1(f) Report year
 Specify the report year.

Report Year	Report Year Comments
Financial (April to March)	

1(g) Context

Provide a summary of the body's nature and functions that are relevant to climate change reporting.

East Renfrewshire Council is a Local Authority that has built a reputation as one of the best performing councils in the country and in many areas our targets are set higher than the Scottish average. We regularly deliver the best services in Scotland - East Renfrewshire is a highly desirable place to live and work.

We have a clear purpose, which is to make people's lives better. Everything we do has this focus in mind and throughout the council there are a significant range of innovative plans and projects underway to help improve the services we offer.

The Council currently has a significant change programme ongoing which builds on the success achieved through the previous Public Service Excellence programme, which ran during 2009 - 2015 and resulted in recurring savings of £4.9m. This Modern Ambitious Programme (MAP) is a blueprint for transforming services and is making significant and rapid progress in driving forward new ways of working, ensuring service improvement and generating efficiencies - particularly around the capabilities of digital, data and modernisation. The scale and pace of this programme of change and modernisation reaches every corner of our council and is key to achieving our vision for the future to be a modern, ambitious council creating a fairer future with all.

Environmental sustainability and climate change are key considerations within the MAP.

The scope of our climate change reporting boundary includes consumption of/emissions from use of gas, electricity and water within Council owned and operated buildings, including council buildings that are managed by the Culture & Leisure Trust. Our reporting boundary also includes energy consumption and emissions from street lighting, council fleet, business travel (see comments in section 3 regarding business travel data for this reporting period). Emissions associated with waste will be included within the scope when the Council's reporting methodology is updated to reflect Public Sector Climate Change Duties Report Template requirements (see note below).

PLEASE NOTE: The Council is not currently using the carbon footprinting methodology required to satisfy all requirements within the Public Sector Climate Change Duties Report Template, which means effective and meaningful comparison between years is not currently possible. The current Environmental Sustainability Strategy and Action Plan (ESSAP) is due for renewal in 2017/18, the aim is to align internal environmental sustainability/climate change reporting with the requirements set out in the Public Sector Climate Change Duties Report Template. Please refer to Q2f Top 5.

PART 2: GOVERNANCE, MANAGEMENT AND STRATEGY**2(a) How is climate change governed in the body?**

Provide a summary of the roles performed by the body's governance bodies and members in relation to climate change. If any of the body's activities in relation to climate change sit outside its own governance arrangements (in relation to, for example, land use, adaptation, transport, business travel, waste, information and communication technology, procurement or behaviour change), identify these activities and the governance arrangements.

Climate change governance can be summarised as follows:

Council/Cabinet --> Corporate Management Team --> Environment Partnership --> Departmental Management Team (DMT) --> Energy Efficiency & Carbon Reduction Team (see attached diagram)

◆ Council/Cabinet - The Cabinet is East Renfrewshire Councils' main decision making body (consisting of local Councillors).

◆ Corporate Management Team (CMT) - The Chief Executive and CMT work closely with councillors to deliver the following:

Leadership: Working with elected members to ensure strong and visible leadership and direction, encouraging and enabling managers to motivate and inspire their teams.

Strategic direction: Ensuring all staff understand and adhere to the strategic aims of the organisation and follow the direction set by the elected members.

Policy advice: Acting as the principal policy advisers to the elected members of the council to lead the development of workable strategies which will deliver the political objectives set by the councillors.

Partnerships: Leading and developing strong partnerships across the local community to achieve improved outcomes and better public services for local people.

Operational management: Overseeing financial and performance management, risk management, people management and change management within the council.

The CMT also oversee matters relating to Climate Change and Sustainability.

◆ Environment Partnership - Consists of a range of representatives from across Council Departments and Services. This partnership is the vehicle for environmental sustainability action.

◆ (Environment) Department Management Team (DMT) - Includes the Director of Environment, three Heads of Service (Environment) and senior managers from the department.

The Environment Department delivers a wide range of services. These include:

o Frontline services - for example cleansing and parks

o Strategic responsibilities, regulatory and advisory services - for example transport, planning, housing and sustainable development

The DMT supports the Energy Efficiency and Carbon Reduction Team (Energy Team) to ensure that any climate change related outcomes, projects, policies, strategies, plans and activities are delivered successfully.

It is important to note that the Governance structure in relation to climate change differs from how it is managed within East Renfrewshire Council (2b). The structure is a simplified illustration of the current position in terms of climate change governance in ERC.

Council/Cabinet

**Corporate
Management Team
(CMT)**

- Environment Partnership**
- ◆ Corporate Management Team (CMT);
 - ◆ Departmental Management Team (DMT); and
 - ◆ Energy Team

**Departmental
Management Team
(DMT)**

Energy Team



2(b) How is climate change action managed and embedded by the body?

Provide a summary of how decision-making in relation to climate change action by the body is managed and how responsibility is allocated to the body's senior staff, departmental heads etc. If any such decision-making sits outside the body's own governance arrangements (in relation to, for example, land use, adaptation, transport, business travel, waste, information and communication technology, procurement or behaviour change), identify how this is managed and how responsibility is allocated outside the body (JPEG, PNG, PDF, DOC)

Climate change management was improved last year (14/15) through endorsement by Cabinet and the Corporate Management Team of the Environmental Sustainability Strategy & Action Plan [ESSAP], which incorporates the Council's climate change and carbon management actions.

The ESSAP introduced devolved responsibility at building level for environmental sustainability and led to the creation of the Think Green Campaign Board, which is co-chaired by the Chief Executive and the Director of Environment. Climate change management in ERC can be summarised as follows:

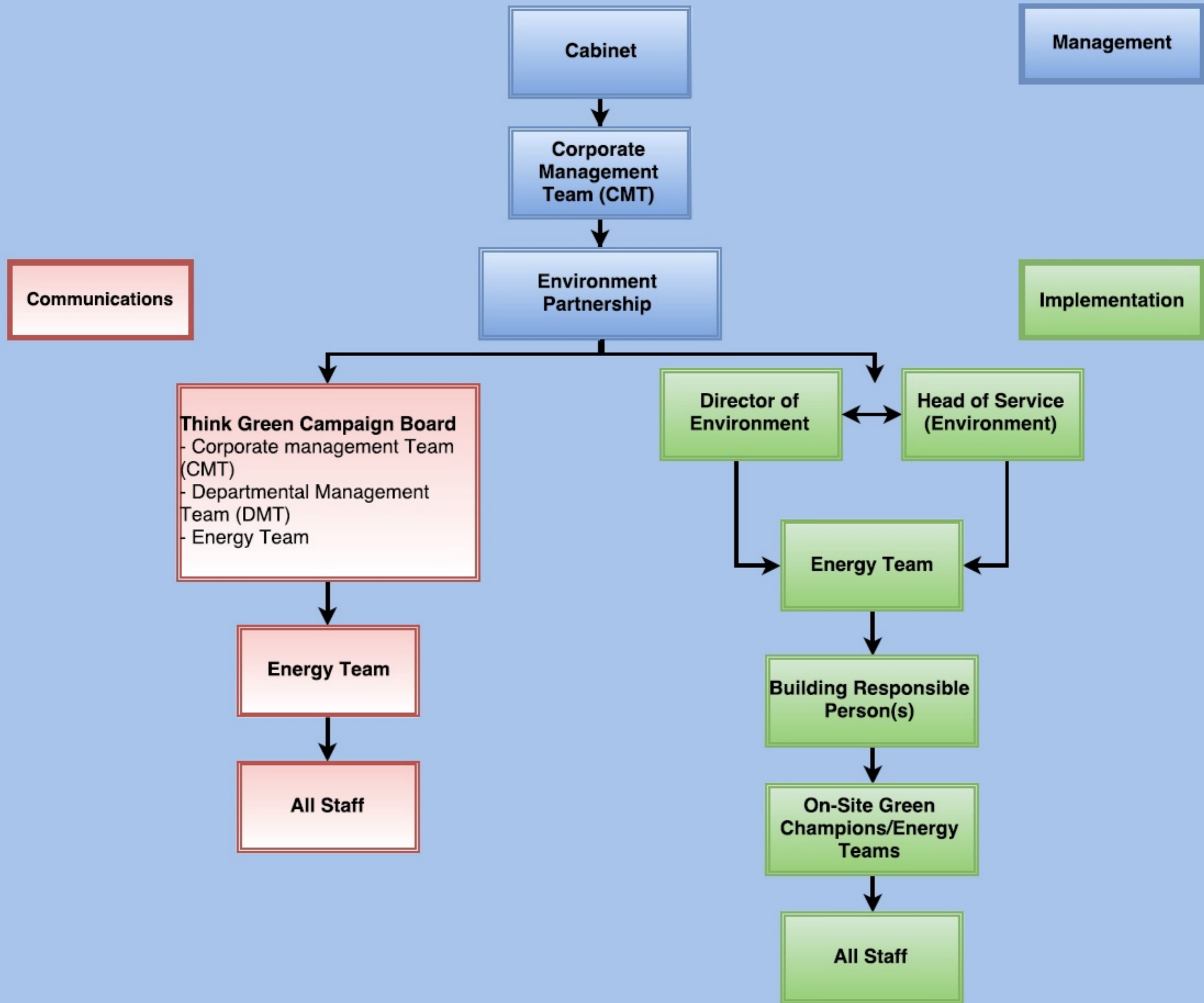
Cabinet --> Corporate Management Team (CMT) --> Environment Partnership --> Think Green Campaign Board --> Director of Environment & head of Service (Environment DMT) --> Energy Efficiency & Carbon Reduction Team --> Building Responsible Person(s) --> On-Site Green Champions/Energy Teams --> All Staff (See diagram)

- ◆ Cabinet - consider information and issues relating to Climate Change and Sustainability (when they arise).
- ◆ Corporate Management Team (CMT) - are responsible for high level decision making and consider and advise on climate change and environmental sustainability matters when they arise and/or have been highlighted by the Energy Efficiency & Carbon Reduction Team (Energy Team) .
- ◆ Environment Partnership - is the forum for discussing and planning action to address climate change, environmental sustainability, carbon reduction and energy efficiency. It also underpins dissemination of communications and behaviour change campaigns etc.
- ◆ Think Green Campaign board - The 'Think Green' campaign was launched to raise awareness of environmental issues and engage council staff and people in the wider area in action to address environmental sustainability.
- ◆ Director of Environment & Head of Service (Environment DMT) - see overview at 2a.
- ◆ Energy Efficiency & Carbon Reduction Team (Energy Team) - have responsibility for projects, issues, reporting and activities relating to carbon reduction, environmental sustainability, climate change and energy efficiency.
- ◆ Building Responsible Person(s) (BRPs) - The Environmental Sustainability Strategy & Action Plan introduced devolved responsibility for environmental sustainability matters to individuals (BRPs) within Departments and Services (as appropriate). Their responsibilities include: roll out of Think Green campaigns to staff at site level, supply/provision/verification of data and addressing site-specific issues and opportunities etc.
- ◆ On-Site Green Champions/Energy Teams - key members of staff including janitors, hall-keepers and facilities managers etc who are actively managing and operating buildings, and who have a specialist knowledge. This includes staff-members within schools with Eco-School responsibilities.
- ◆ All Staff - all other employees working for the council who are invited to get involved with behaviour change campaigns.

2(c) Does the body have specific climate change mitigation and adaptation objectives in its corporate plan or similar document?

Provide a brief summary of objectives if they exist.

Objective	Doc Name	Doc Link
SOA Outcome 3: East Renfrewshire is a thriving, attractive and sustainable place for residents and businesses to grow.	East Renfrewshire Council - Single Outcome Agreement 2013 / 16	http://www.eastrenfrewshire.gov.uk/odp
ODP Outcome 3.2: Our natural and built environment is enhanced and our environmental impact is minimised	East Renfrewshire Council - Single Outcome Agreement 2013 / 16	http://www.eastrenfrewshire.gov.uk/odp



2(c) Does the body have specific climate change mitigation and adaptation objectives in its corporate plan or similar document?

Provide a brief summary of objectives if they exist.

Objective	Doc Name	Doc Link
ODP Outcome 3.4: Residents live in warm, dry and energy efficient homes	East Renfrewshire Council - Single Outcome Agreement 2013 / 16	http://www.eastrenfrewshire.gov.uk/odp
Corporate Statement - Vision: To be the best Council in Scotland, to maintain an attractive, safe local environment where everyone has the opportunity to benefit from an enhanced quality of life	East Renfrewshire Council - Corporate Statement 2013-17	http://www.eastrenfrewshire.gov.uk/yourfuture
Environmental Sustainability Strategy - Vision: East Renfrewshire is a thriving, attractive and sustainable place where environmental impacts are minimised	East Renfrewshire Council - Environmental Sustainability Strategy 2015 - 2018	http://www.eastrenfrewshire.gov.uk/green-policies-and-reports
<p>This Environmental Sustainability Action Plan 2015/16 to 2017/18 was developed to underpin the Council's Environmental Sustainability Strategy 2015/16 to 2017/18.</p> <p>The Action Plan details specific activities that will be undertaken; and is used to monitor progress towards addressing environmental sustainability, climate change and carbon reduction.</p> <p>The Action Plan is set out under three distinct themes: Sustainable Council, Sustainable Environment and Sustainable Communities.</p>	East Renfrewshire Council - Environmental Sustainability Action Plan 2015 - 2018	http://www.eastrenfrewshire.gov.uk/green-policies-and-reports

2(d) Does the body have a climate change plan or strategy?

If yes, provide the name of any such document and details of where a copy of the document may be obtained or accessed.

- ◆ East Renfrewshire Council - Environmental Sustainability Strategy 2015/16 - 2017/18 - <http://www.eastrenfrewshire.gov.uk/green-policies-and-reports>
- ◆ East Renfrewshire Council - Environmental Sustainability Action Plan 2015/16 - 2017/18 - <http://www.eastrenfrewshire.gov.uk/green-policies-and-reports>

2(e) Does the body have any plans or strategies covering the following areas that include climate change?

Provide the name of any such document and the timeframe covered.

Topic area	Name of document	Link	Time period covered	Comments
Adaptation	<ul style="list-style-type: none"> ◆ Environmental Sustainability Action Plan [ESAP] ◆ Local Development Plan [LDP] 	<ul style="list-style-type: none"> ◆ http://www.eastrenfrewshire.gov.uk/green-policies-and-reports 	<ul style="list-style-type: none"> ◆ ESAP 2015 - 2018 ◆ LDP produced/adopted 2015 to guide sustainable growth up to 2025 and beyond 	LDP2 and accompanying SPGs currently under development.
Business travel	Environmental Sustainability Action Plan [ESAP]	http://www.eastrenfrewshire.gov.uk/green-policies-and-reports	2015 - 2018	
Staff Travel	Active Travel Action Plan	http://www.eastrenfrewshire.gov.uk/exercise-and-outdoor-activities	2016 onwards	<p>The Active Travel Action Plan sets out how by promoting and implementing active travel we can play an important role in delivering benefits to our residents.</p> <p>Introduced a number of initiatives to encourage our staff to access work sustainably and have gained Cycle Friendly Employer status for a number of our buildings.</p> <p>Details plans for developing and extending ER Cycle, Walking and Green Networks.</p>
Energy efficiency	<ul style="list-style-type: none"> ◆ Environmental Sustainability Action Plan ◆ Energy Management Policy Statement 	<ul style="list-style-type: none"> ◆ http://www.eastrenfrewshire.gov.uk/green-policies-and-reports ◆ http://www.eastrenfrewshire.gov.uk/about-think-green 	<ul style="list-style-type: none"> ◆ ESAP 2015 - 2018 ◆ Policy statement updated annually 	Energy Management policy statement is due for review by the end of the financial year 16/17.
Fleet transport	Fleet Asset Management Plan 2016		2016	No review date set - likely to be updated in 2017.
Information and communication technology				An extensive overhaul of ICT is ongoing.

2(e) Does the body have any plans or strategies covering the following areas that include climate change?

Provide the name of any such document and the timeframe covered.

Topic area	Name of document	Link	Time period covered	Comments
Renewable energy	<ul style="list-style-type: none"> ◆ Environmental Sustainability Action Plan ◆ Energy Management Policy Statement ◆ Local Development Plan and Supplementary Planning Guides [SPG] 	<ul style="list-style-type: none"> ◆ http://www.eastrenfrewshire.gov.uk/green-policies-and-reports 	<ul style="list-style-type: none"> ◆ ESAP 2015 - 2018. ◆ Policy statement updated annually ◆ LDP produced/adopted 2015 to guide sustainable growth up to 2015 and beyond. ◆ SPGs ongoing development 	<p>Energy Management policy statement is due for review by the end of the financial year 16/17.</p> <p>LDP2 and accompanying SPGs currently under development.</p>
Sustainable/renewable heat	<ul style="list-style-type: none"> ◆ Environmental Sustainability Action Plan ◆ Local Development Plan and Supplementary Planning Guides [SPG] 	<ul style="list-style-type: none"> ◆ http://www.eastrenfrewshire.gov.uk/green-policies-and-reports 	<ul style="list-style-type: none"> ◆ ESAP 2015 - 2018. ◆ LDP produced/adopted 2015 to guide sustainable growth up to 2015 and beyond. ◆ SPGs ongoing development 	<p>A District Heating Strategy is being developed.</p> <p>LDP2 and accompanying SPGs currently under development.</p>
Waste management	<ul style="list-style-type: none"> ◆ Driven by Scottish Government targets (e.g. Zero Waste Scotland) - Waste (Scotland) Regulations 2014 		Annual targets and reporting	
Water and sewerage	<ul style="list-style-type: none"> ◆ Environmental Sustainability Action Plan ◆ Local Development Plan and Supplementary Planning Guides [SPG] 	<ul style="list-style-type: none"> ◆ http://www.eastrenfrewshire.gov.uk/green-policies-and-reports 	<ul style="list-style-type: none"> ◆ ESAP 2015 - 2018. ◆ LDP produced/adopted 2015 to guide sustainable growth up to 2015 and beyond. ◆ SPGs ongoing development 	LDP2 and accompanying SPGs currently under development.
Land Use	<ul style="list-style-type: none"> ◆ Environmental Sustainability Action Plan ◆ Local Development Plan and Supplementary Planning Guides [SPG] 	<ul style="list-style-type: none"> ◆ http://www.eastrenfrewshire.gov.uk/green-policies-and-reports 	<ul style="list-style-type: none"> ◆ ESAP 2015 - 2018. ◆ LDP produced/adopted 2015 to guide sustainable growth up to 2015 and beyond. ◆ SPGs ongoing development 	LDP2 and accompanying SPGs currently under development.
Other (state topic area covered in comments)	Environmental Sustainability Policy Statement	<ul style="list-style-type: none"> ◆ http://www.eastrenfrewshire.gov.uk/about-think-green 	<ul style="list-style-type: none"> ◆ Policy statement updated annually 	Environmental Sustainability policy statement is due for review by the end of the financial year 16/17.
Other (state topic area covered in comments)	Local Transport Strategy	<ul style="list-style-type: none"> ◆ http://www.eastrenfrewshire.gov.uk/local-transport-strategy 	<ul style="list-style-type: none"> ◆ Projects and actions regularly added and updated. 	Covers both public and staff private transport. Fleet and commercial vehicles, roads, etc.

2(f) What are the body's top 5 priorities for climate change governance, management and strategy for the year ahead?

Provide a brief summary of the body's areas and activities of focus for the year ahead.

1. Re-affirm the organisational boundary for carbon management including responsibility for targets, KPIs and reporting etc for Scope 1/2/3 emissions.
2. Review the current environmental sustainability reporting arrangements/measures etc to align with Carbon Footprinting information prepared and submitted as part of this process (i.e. align with the Public Sector Climate Change Duties Report Template and reporting timeframe etc).
3. Embed devolved responsibility for environmental sustainability at Department / Service / Building level.
4. Develop energy conservation measures projects register.
5. Increase funding availability for energy conservation projects.
6. Address business mileage data comparison inconsistencies.
7. Establish a corporate approach to addressing climate change adaptation.
8. Raise the profile of and improve corporate performance in terms of sustainable procurement.
9. Continue to improve environmental communications.

2(g) Has the body used the Climate Change Assessment Tool(a) or equivalent tool to self-assess its capability / performance?

If yes, please provide details of the key findings and resultant action taken.

(a) Yes.

Using the scale - 0 to 5: the Council scored two's in most areas with some three's and some zero's.

There is scope for improvement. Another CCAT Assessment will be carried out to measure progress and identify opportunities for improvement.

A biannual review would mean the next CCAT assessment will be planned for 16/17.

2(h) Supporting information and best practice

Provide any other relevant supporting information and any examples of best practice by the body in relation to governance, management and strategy.

PART 3: EMISSIONS, TARGETS AND PROJECTS

3a Emissions from start of the year which the body uses as a baseline (for its carbon footprint) to the end of the report year							
<p>Complete the following table using the greenhouse gas emissions total for the body calculated on the same basis as for its annual carbon footprint /management reporting or, where applicable, its sustainability reporting. Include greenhouse gas emissions from the body's estate and operations (a) (measured and reported in accordance with Scopes 1 & 2 and, to the extent applicable, selected Scope 3 of the Greenhouse Gas Protocol (b)). If data is not available for any year from the start of the year which is used as a baseline to the end of the report year, provide an explanation in the comments column. (a) No information is required on the effect of the body on emissions which are not from its estate and operations.</p>							
Reference Year	Year	Scope1	Scope2	Scope3	Total	Units	Comments

3b Breakdown of emission sources									
Complete the following table with the breakdown of emission sources from the body's most recent carbon footprint (greenhouse gas inventory); this should correspond to the last entry in the table in 3 (a) above. Use the 'Comments' column to explain what is included within each category of emission source entered in the first column. If, for any such category of emission source, it is not possible to provide a simple emission factor(a) leave the field for the emission factor blank and provide the total emissions for that category of emission source in the 'Emissions' column.									
Total	Comments – reason for difference between Q3a & 3b.	Emission source	Scope	Consumption data	Units	Emission factor	Units	Emissions (tCO2e)	Comments
31227.8	The Council is not currently using this methodology. Please refer to Q2f Top 5 priorities. Business mileage data has not been included for 15/16 as there are inconsistencies between reporting years. Please refer to Q2f Top 5 priorities.	Refuse Municipal to Landfill	Scope 3	21993	tonnes	459.00000	kg CO2e/tonne	10094.8	From Waste Team
		Mixed recycling	Scope 3	17179	tonnes	21.00000	kg CO2e/tonne	360.8	From Waste Team
		Organic Food & Drink Composting	Scope 3	10446	tonnes	6.00000	kg CO2e/tonne	62.7	From Waste Team
		Diesel (average biofuel blend)	Scope 1	565186	litres	2.58390	kg CO2e/litre	1460.4	From Fleet Management
		Gas Oil	Scope 1	84296	litres	2.90884	kg CO2e/litre	245.2	From Fleet Management
		Grid Electricity (generation)	Scope 1	22634179	kWh	0.46219	kg CO2e/kWh	10461.3	Taken from annual CRC report - Total Adjusted Consumption i.e. inc street lighting and uplift for estimates
		Grid Electricity (transmission & distribution losses)	Scope 3	22634179	kWh	0.03816	kg CO2e/kWh	863.7	as above for generation
		Natural Gas	Scope 1	40704299	kWh	0.18445	kg CO2e/kWh	7507.9	Taken from CRC report - Total Adjusted Consumption
		Water - Supply	Scope 3	168178	m3	0.34400	kg CO2e/m3	57.9	Taken from STC actual charges for 2015/16
		Water - Treatment	Scope 3	159769	m3	0.70800	kg CO2e/m3	113.1	95% of actual charges taken from STC

3c Generation, consumption and export of renewable energy					
Provide a summary of the body's annual renewable generation (if any), and whether it is used or exported by the body.					
Technology	Renewable Electricity		Renewable Heat		Comments
	Total consumed by the organisation (kWh)	Total exported (kWh)	Total consumed by the organisation (kWh)	Total exported (kWh)	
Other					

3d Targets										
List all of the body's targets of relevance to its climate change duties. Where applicable, overall carbon targets and any separate land use, energy efficiency, waste, water, information and communication technology, transport, travel and heat targets should be included.										
Name of Target	Type of Target	Target	Units	Boundary/scope of Target	Progress against target	Year used as baseline	Baseline figure	Units of baseline	Target completion year	Comments
										The Council is not currently using the carbon footprinting methodology applied, which means comparison between years is not currently possible. Please refer to Q2f Top 5.

3e Estimated total annual carbon savings from all projects implemented by the body in the report year			
Total	Emissions Source	Total estimated annual carbon savings (tCO2e)	Comments
4830	Electricity	584	This is simply a comparison between what was reported as part of this process last year and this year, which shows a decrease.
	Natural gas	423	This is simply a comparison between what was reported as part of this process last year and this year, which shows an increase. This increase can partially be explained by billing anomalies in the reporting period which are being rectified.
	Other heating fuels		
	Waste	3758	This increase is simply a comparison between what was reported as part of this process last year and this year for waste to landfill, which shows a increase. The main reason for this is due to changes in the conversion factor, which is outwith the Council's control.
	Water and sewerage	6	This is simply a comparison between what was reported as part of this process last year and this year, which shows a decrease.
	Business Travel	0	Not reported for 15/16 due to data irregularities
	Fleet transport	28	This is simply a comparison between what was reported as part of this process last year and this year, which shows a decrease.
	Other (specify in comments)	31	Gas oil. This is simply a comparison between what was reported as part of this process last year and this year, which shows an increase.
	Other (specify in comments)		

3f Detail the top 10 carbon reduction projects to be carried out by the body in the report year											
Provide details of the 10 projects which are estimated to achieve the highest carbon savings during report year.											
Project name	Funding source	First full year of CO2e savings	Are these savings figures estimated or actual?	Capital cost (£)	Operational cost (£/annum)	Project lifetime (years)	Primary fuel/emission source saved	Estimated carbon savings per year (tCO2e/annum)	Estimated costs savings (£/annum)	Behaviour Change	Comments
											see 3g

3g Estimated decrease or increase in the body's emissions attributed to factors (not reported elsewhere in this form) in the report year				
If the emissions increased or decreased due to any such factor in the report year, provide an estimate of the amount and direction.				
Total	Emissions source	Total estimated annual emissions (tCO2e)	Increase or decrease in emissions	Comments
-814	Estate changes	57	Decrease	Building closures in the reporting period resulted in reduced carbon emissions from these sources.
	Service provision			
	Staff numbers			
	Other (specify in comments)	358	Decrease	Savings from heating and lighting projects
	Other (specify in comments)	144	Decrease	savings from improvements to CHP at Eastwood High School
	Other (specify in comments)	49	Decrease	Savings from improvements to Ground Source System at Isobel Mair
	Other (specify in comments)	206	Decrease	Savings from street lighting improvements

3h Anticipated annual carbon savings from all projects implemented by the body in the year ahead			
Total	Source	Saving	Comments
	0 Electricity		NDEE Project - details to follow when Investment Grade proposal accepted
	Natural gas		NDEE Project - details to follow when Investment Grade proposal accepted
	Other heating fuels		
	Waste		
	Water and sewerage		
	Business Travel		
	Fleet transport		
	Other (specify in comments)		

3i Estimated decrease or increase in the body's emissions attributed to factors (not reported elsewhere in this form) in the year ahead				
If the emissions are likely to increase or decrease due to any such factor in the year ahead, provide an estimate of the amount and direction.				
Total	Emissions source	Total estimated annual emissions (tCO2e)	Increase or decrease in emissions	Comments
	0 Estate changes			Building closures as a result of new Eastwood Health Centre - details to follow Corporate Landlord - details to follow Accommodation Strategy - details to follow
	Service provision			Agile working - details to follow Digital Platform roll-out - details to follow
	Staff numbers			Environment Department re-structure - details to follow
	Other (specify in comments)			

3j Total carbon reduction project savings since the start of the year which the body uses as a baseline for its carbon footprint

If the body has data available, estimate the total emissions savings made from projects since the start of that year ("the baseline year").

Total	Comments
	The Council is not currently using the carbon footprinting methodology applied, which means comparison between years is not currently possible. Please refer to Q2f Top 5.

3k Supporting information and best practice

Provide any other relevant supporting information and any examples of best practice by the body in relation to its emissions, targets and projects.

- To raise awareness on creating a 'greener' environment
 - Pop-up stands in main council buildings – currently being refreshed.
 - Think Green web site updates and promotion
 - Think Green mailbox to obtain feedback from public and staff.
 - Staff survey to gain insight into Council wider attitudes to the environment.
 - 'Think Green' services brochure to public.
 - Social Media activity and promotion, linking to national campaigns.
 - Cycle-friendly employer award.

- To encourage staff and residents to take steps to a 'greener' East Renfrewshire
 - EV Pool Cars promotion to encourage green business travel for staff.
 - Cycle to Work campaigns – promoting cycle scheme; update of cycle allowance scheme and promotion of cycle Led rides
 - WWF Earth Hour – switch-off campaign.
 - 'Get fit for the new Year' – walking and cycling campaign for improving health and reducing carbon emissions.
 - School and Festive Holiday Energy Efficiency campaigns – 'The Big Holiday Switch Off', 'Last Out, Lights Out' and school holiday's campaign.
 - Cycle to Work Day event – Rouken glen park Dr Bike session, Electric Bike demonstration & cycle led ride.
 - Climate Week campaign – 4.30pm–7.30pm switch off campaign; supporting new learning resources page for resource efficiency; refresh of think green and promotion of EV Pool cars again.
 - Social Media activity and promotion, linking to national campaigns.
 - Award of Cycle friendly Employer grant for building a new cycle shelter at Thornliebank Depot.
 - Think Green Mailbox correspondence – activities and feedback.

- To link all eco-friendly council projects and portray a focused message under one campaign
 - EV Charge Points promotion
 - EV Pool Cars promotion
 - New Newton Mearns Active Travel Path to encourage cycling and walking.
 - Promotion of emission checks for cars in ER garages.
 - Social Media activity and promotion, linking to national campaigns.
 - Cycle-friendly employer award – PR of Cycle friendly Employer grant being provided for building a new cycle shelter at Thornliebank Depot.

- Engage school pupils and the public to encourage them to take action within their community.
 - Think Green public engagement stand in Dunterlie
 - Home Energy Scotland (HES) stand providing advice to residents at Rouken Glen park Armed Forces Day
 - Home Energy Scotland (HES) stand providing advice to residents at Dunterlie.
 - Eco-Schools presentations on Climate Change and Sustainability.
 - Signposted SME's to support from Resource Efficient Scotland (RES).
number of enterprises each authority has).
 - Social Media activity and promotion, linking to national campaigns.
 - Think Green Mailbox correspondence – activities and feedback.

PART 4: ADAPTATION**4(a) Has the body assessed current and future climate-related risks?**

If yes, provide a reference or link to any such risk assessment(s).

A Strategic Environmental Assessment is prepared to accompany the Local Development Plan .

Strategic Environmental Assessment (SEA) for Local Development Plan (LDP):
www.eastrenfrewshire.gov.uk/sea-ldp

A State of the Environment Report is published and forms part of the SEA but is also separately updated bi-annually.

Current state of environment report (Sept 2016):
www.eastrenfrewshire.gov.uk/sea

Historic State of environment and baseline tables (used for assessing the SEA for LDP):

\\bhqfs04\environment\PlanDev\Development Planning\S4 SEA\S4.1 Baseline Data\S4.1.2 State of Env Rept\EnvRpt_V4.0
 \\bhqfs04\environment\PlanDev\Development Planning\S4 SEA\S4.1 Baseline Data\S4.1.1 Baseline Tables\SEA_v5.0

The Environment Department will undertake an environmental sustainability/climate change risk assessment. However, there are no plans to create a stand alone environmental sustainability/climate change risk register. Any environmental sustainability risks would be incorporated into existing risk registers i.e. Strategic, operational or service, depending on the risk.

4(b) What arrangements does the body have in place to manage climate-related risks?

Provide details of any climate change adaptation strategies, action plans and risk management procedures, and any climate change adaptation policies which apply across the body.

A range of policies are included within the Local development Plan which seek to manage the impact of land use on the natural and built environment. Policies are in place to cover green belt, greenspace, biodiversity, water management, flooding, renewable energy, energy efficiency.

4(c) What action has the body taken to adapt to climate change?

Include details of work to increase awareness of the need to adapt to climate change and build the capacity of staff and stakeholders to assess risk and implement action.

Policies included within the LDP seek to address climate change but which also present opportunities to undertake a range of project work which help to manage and protect the environment and which promote sustainable travel.

4(d) Where applicable, what progress has the body made in delivering the policies and proposals referenced N1, N2, N3, B1, B2, B3, S1, S2 and S3 in the Scottish Climate Change Adaptation Programme(a) ("the Programme")?					
If the body is listed in the Programme as a body responsible for the delivery of one or more policies and proposals under the objectives N1, N2, N3, B1,B2, B3, S1, S2 and S3, provide details of the progress made by the body in delivering each policy or proposal in the report year. If it is not responsible for delivering any policy or proposal under a particular objective enter "N/A" in the 'Delivery progress made' column for that objective.					
(a) This refers to the programme for adaptation to climate change laid before the Scottish Parliament under section 53(2) of the Climate Change (Scotland) Act 2009 (asp 12) which currently has effect. The most recent one is entitled "Climate Ready Scotland: Scottish Climate Change Adaptation Programme" dated May 2014.					
Objective	Objective reference	Theme	Policy / Proposal reference	Delivery progress made	Comments
Understand the effects of climate change and their impacts on the natural environment.	N1	Natural Environment		The Council adopted the Local Development Plan in 2105. This contains a range of policies which seek to prevent/mitigate climate change.	Local biodiversity sites have recently been assessed and there are on-going habitat monitoring arrangements in place.
Support a healthy and diverse natural environment with capacity to adapt.	N2	Natural Environment		Integrated green infrastructure is promoted in new developments, in addition to the green network policy that is in place.	Local biodiversity review undertaken. Core paths and green network projects underway.
Sustain and enhance the benefits, goods and services that the natural environment provides.	N3	Natural Environment		On-going environmental project work, policy development and community engagement offering opportunities linking environmental education, health and wellbeing.	
Understand the effects of climate change and their impacts on buildings and infrastructure networks.	B1	Buildings and infrastructure networks		Flood risk data is kept up to date. Implementation of HEEPs:ABS/SEEP projects, implementation of EESH and improving the quality of housing [SHQS] - all on-going	
Provide the knowledge, skills and tools to manage climate change impacts on buildings and infrastructure.	B2	Buildings and infrastructure networks		Continued CPD for staff and commissioning of specialist study work if required. Think Green Campaign.	

4(d) Where applicable, what progress has the body made in delivering the policies and proposals referenced N1, N2, N3, B1, B2, B3, S1, S2 and S3 in the Scottish Climate Change Adaptation Programme(a) ("the Programme")?

If the body is listed in the Programme as a body responsible for the delivery of one or more policies and proposals under the objectives N1, N2, N3, B1, B2, B3, S1, S2 and S3, provide details of the progress made by the body in delivering each policy or proposal in the report year. If it is not responsible for delivering any policy or proposal under a particular objective enter "N/A" in the 'Delivery progress made' column for that objective.

(a) This refers to the programme for adaptation to climate change laid before the Scottish Parliament under section 53(2) of the Climate Change (Scotland) Act 2009 (asp 12) which currently has effect. The most recent one is entitled "Climate Ready Scotland: Scottish Climate Change Adaptation Programme" dated May 2014.

Objective	Objective reference	Theme	Policy / Proposal reference	Delivery progress made	Comments
Increase the resilience of buildings and infrastructure networks to sustain and enhance the benefits and services provided.	B3	Buildings and infrastructure networks		River Basin Management Planning is taken into account at Strategic and Local Development Plan development. Implementation of HEEPs:ABS/SEEP projects, implementation of EESH and improving the quality of housing [SHQS] - all on-going	
Understand the effects of climate change and their impacts on people, homes and communities.	S1	Society		as above	
Increase the awareness of the impacts of climate change to enable people to adapt to future extreme weather events.	S2	Society		Local Development Plan Consultation. Think Green Campaign	
Support our health services and emergency responders to enable them to respond effectively to the increased pressures associated with a changing climate.	S3	Society		n/a	

4(e) What arrangements does the body have in place to review current and future climate risks?

Provide details of arrangements to review current and future climate risks, for example, what timescales are in place to review the climate change risk assessments referred to in Question 4(a) and adaptation strategies, action plans, procedures and policies in Question 4(b).

The LDP and SEA are reviewed 5 yearly and the State of the Environment report is reviewed bi-annually. If required, Supplementary Planning Guidance can be prepared to deal with emerging land use issues.

4(f) What arrangements does the body have in place to monitor and evaluate the impact of the adaptation actions?

Please provide details of monitoring and evaluation criteria and adaptation indicators used to assess the effectiveness of actions detailed under Question 4(c) and Question 4(d).

The SEA is updated in tandem with the LDP and at this time seek information from key stake holders which allows us to present an up to date reflection of environmental matters. In addition, the State of the Environment Report is published bi-annually.

Historic State of environment and baseline tables (used for assessing the SEA for LDP):

\\bhqfs04\environment\PlanDev\Development Planning\S4 SEA\S4.1 Baseline Data\S4.1.2 State of Env Rept\EnvRpt_V4.0
\\bhqfs04\environment\PlanDev\Development Planning\S4 SEA\S4.1 Baseline Data\S4.1.1 Baseline Tables\SEA_v5.0

4(g) What are the body's top 5 priorities for the year ahead in relation to climate change adaptation?

Provide a summary of the areas and activities of focus for the year ahead.

The Strategic Aim of the adopted LDP is:

“To foster a rich and diverse environment and promote and manage land use to change for the benefit of the local community and economy in a manner which is sustainable”

Corporate Statement - Vision: To be the best Council in Scotland, to maintain an attractive, safe local environment where everyone has the opportunity to benefit from an enhanced quality of life.

Environmental Sustainability Strategy - Vision: East Renfrewshire is a thriving, attractive and sustainable place where environmental impacts are minimised.

The Environment Department will undertake an environmental sustainability/climate change risk assessment. However, there are no plans to create a stand alone environmental sustainability/climate change risk register. Any environmental sustainability risks would be incorporated into existing risk registers i.e. Strategic, operational or service, depending on the risk.

4(h) Supporting information and best practice

Provide any other relevant supporting information and any examples of best practice by the body in relation to adaptation.

BLANK PAGE

PART 5: PROCUREMENT

5(a) How have procurement policies contributed to compliance with climate change duties?

Provide information relating to how the procurement policies of the body have contributed to its compliance with climate changes duties.

Existing arrangements (within the reporting period):

East Renfrewshire Council currently has a Sustainable Procurement Policy supported by our Director of Environment

◆ <http://www.eastrenfrewshire.gov.uk/sustainable-procurement>

The council has nominated the Director of Environment, Andy Cahill, as its Sustainable Procurement Champion.

This policy reflects East Renfrewshire Council's approach to sustainable procurement and is intended that it will apply to all contracts for works, goods or services in which the Council has an interest. In particular, it seeks to address environmental sustainability, which includes climate change mitigation activities.

Before carrying out a regulated procurement, procurers are encouraged to consider how in conducting the procurement process they can:

- ◆ Improve the economic, social, and environmental wellbeing of the authority's area.
- ◆ Facilitate the involvement of small and medium enterprises, third sector bodies and supported businesses in the process.
- ◆ Promote innovation.

The council's Sustainable Procurement Policy is applied to all contracts for goods, works and services that have a value in excess of £100,000. Procuring officers shall give full consideration to the relevance and appropriateness of the use of social and economic community benefit clauses in all tender exercises and where deemed suitable ensure relevant requirements are included in tender documentation.

Subsequent to the Act's introduction, consideration of the use of social and economic community benefit requirements shall be extended to goods and services contracts with a value of £50,000 or more.

In addition, the council will seek to maximise opportunities for environmental benefits and work with suppliers to reduce environmental impacts in procurement activity for goods, services or works carried out using Quick Quote with a value greater than £25,000.

The policy documents embed sustainable procurement and community benefits into the procurement process/cycle. This is firstly reflected in the Standing Orders related to Contract whereby the requirements of the Sustainable Procurement Policy are reflected. The mechanism for ensuring depts.capture and record their consideration is through the completion of a Contract Strategy Document (CSD). This document is to be completed for each tendering exercise that is conducted, this is again reflected in the Standing Orders relating to Contracts.

Areas to be considered when completing the CSD in relation to sustainability include:

- The completion of Environmental Opportunities Checklist
- Is fair working practices relevant to this procurement
- How will the procurement promote innovation?
- How will the procurement facilitate the involvement of third sector bodies?
- Will the procurement facilitate the involvement of supported businesses?
- Will the tender make provision for sub-contract opportunities for SME's
- Inclusion of community benefits, where applicable

The "Environmental Opportunities Checklist" that is to be completed for all requirements in excess of £25,000 concentrates on the undernoted areas with further information available on the council intranet:

- Reduce/Minimise waste
- Reduce Transport Impacts
- Reduce Carbon Emissions
- Apply Whole Life Costings
- Prevent Use of Hazardous Materials
- Reduce Energy Consumption/and or improve energy efficiency
- Source Food and Drink more sustainably
- Ensure Timber and Paper are sourced sustainably
- Ensure Construction Projects adhere to sustainability guidelines and practices

Moving forward:

The Council is preparing a revised Corporate Procurement Strategy to align with the requirements of the new procurement legislation. The strategy will address how as a council we will meet with the requirements of the sustainable procurement duty, namely;

- improve the economic, social, and environmental wellbeing of the authority's area,
- facilitate the involvement of small and medium enterprises, third sector bodies and supported businesses in the process, and
- promote innovation,

5(b) How has procurement activity contributed to compliance with climate change duties?

Provide information relating to how procurement activity by the body has contributed to its compliance with climate changes duties.

To underpin the Sustainable Procurement Policy referred to above, the Council has in place a Sustainable Procurement e-learning course for employees to allow them to understand what Sustainable Procurement is, why it is important and what they should consider doing when procuring goods and services to reduce impacts.

A Sustainable Procurement Tool-kit, consisting of FAQ's, Guidance and an Environmental Opportunities Checklist has been developed for employees and is embedded within procurement processes and documentation. The checklist is in place to raise awareness of opportunities to reduce environmental impacts and is completed by the 'procurer'.

The council is a member of the Glasgow City Region City Deal that has a community benefits strategy and policy agreed that supports the appropriate use of the suite of Sustainable Procurement Tools, prioritisation toolkit and sustainability test. One of the key drivers for the delivery of the projects and the available funding is the demonstration that Gross Value Add, GVA, has been achieved through maximising of social, economic and environmental benefits.

Contract; CE 16 17 007

Right to Purchase Post-Consumer Glass, Cans and Mixed Plastics

Contract in place with the key objective to reduce the volume of waste which the Council sends to landfill to include the following materials

- Plastics drinks bottles (PET)
- Clear plastics milk bottles (HDPE)
- Cooking oil bottles
- Toiletry/household cleaning bottles
- Food trays
- Margarine tubs
- Yoghurt pots
- Fruit and vegetable punnets
- Glass bottles and jars
- Ferrous and non-ferrous food and drinks cans
- Empty aerosols
- Clean aluminium foil

Minimum expectations

Implement Site Waste Management Plans that not only meet any minimum regulatory requirements, but exceed these requirements by setting project-specific targets for waste reduction and recovery and measuring performance.

Measure and report progress against the corporate KPIs for waste and waste to landfill

5(c) Supporting information and best practice

Provide any other relevant supporting information and any examples of best practice by the body in relation to procurement.

The Scottish Government PCS-tendering system provides, through the e-vendor management module, a number of standardised questions covering a variety of areas, one of which is sustainability. The Category Manager has the option to pull through the questions that are appropriate to their tender.

The Procurement Category Managers have all received the Scottish Government Marrakech training, an introduction to sustainable public procurement in Scotland.

Internal training has been facilitated though the development of an e-learning module that departmental staff are encourage to complete

BLANK PAGE

PART 6: VALIDATION AND DECLARATION

6(a) Internal validation process

Briefly describe the body's internal validation process, if any, of the data or information contained within this report.

The Report is compiled from information submitted by members of the Environment Partnership and representatives from Departments and Services across the Council.

The final report for will be approved by Cabinet in December 2016.

6(b) Peer validation process

Briefly describe the body's peer validation process, if any, of the data or information contained within this report.

An internal peer review/validation process will be in place for the 16/17 reporting period.

No external peer validation currently in place. No plans for external peer validation in the short to medium term.

6(c) External validation process

Briefly describe the body's external validation process, if any, of the data or information contained within this report.

CRC data is externally validated annually as part of STC's Energy Management Bureau Service

STC Accreditations include ISO 9001, ISO 14001 and ISO 27001

CRC Audit carried out by SEPA (October 2016)

6(d) No validation process

If any information provided in this report has not been validated, identify the information in question and explain why it has not been validated.

N/A

6e - Declaration

I confirm that the information in this report is accurate and provides a fair representation of the body's performance in relation to climate change.

Name	Role in the body	Date

BLANK PAGE

RECOMMENDED – WIDER INFLUENCE**Q1 Historic Emissions (Local Authorities only)**

Please indicate emission amounts and unit of measurement (e.g. tCO₂e) and years. Please provide information on the following components using data from the links provided below. Please use (1) as the default unless targets and actions relate to (2).

(1) UK local and regional CO₂ emissions: **subset dataset** (emissions within the scope of influence of local authorities):

(2) UK local and regional CO₂ emissions: **full dataset**:

Select the default target dataset

Subset

Table 1a																
Source	Dataset	Sector	2005	2006	2007	2008	2009	2010	2011	2012	2013	2014	Units	Comments		
Subset	DECC Sectors	Total Emissions	522.42	504.39	484.69	482.99	459.98	476.40	436.18	428.25	419.91	385.05	ktCO ₂	This information is only included as it forms part of the reporting requirements. East Renfrewshire Council does not currently rely on this dataset to measure progress/change (mainly due to the data-lag issues).		
		Industry and Commercial	88.65	96.27	80.42	76.28	84.41	89.17	81.97	65.06	62.54	60.50	ktCO ₂			
		Domestic	257.37	253.99	246.83	250.58	224.28	237.57	209.11	224.47	219.85	184.75	ktCO ₂			
		Transport total	176.40	154.12	157.45	156.13	151.28	149.65	145.10	138.73	137.52	139.80	ktCO ₂			
		Per Capita	5.81	5.62	5.40	5.37	5.11	5.27	4.80	4.70	4.59	4.17	tCO ₂			
	Other Sectors	Waste												tCO ₂ e		
		N. LULUCF Net Emissions													ktCO ₂	
		Other (specify in 'Comments')														

Table 1b																
Source	Dataset	Sector	2005	2006	2007	2008	2009	2010	2011	2012	2013	2014	Units	Comments		
Subset	DECC Sectors	Total Emissions	559.19	540.96	521.19	517.81	496.17	512.34	471.91	463.81	455.81	421.07	ktCO ₂	This information is only included as it forms part of the reporting requirements. East Renfrewshire Council does not currently rely on this dataset to measure progress/change (mainly due to the data-lag issues).		
		Industry and Commercial	88.99	96.68	81.00	76.69	84.93	89.61	82.48	65.55	63.35	61.15	ktCO ₂			
		Domestic	257.37	253.99	246.83	250.58	224.28	237.57	209.11	224.47	219.85	184.75	ktCO ₂			
		Transport total	212.83	190.29	193.37	190.53	186.95	185.16	180.32	173.79	172.62	175.18	ktCO ₂			
		Per Capita	6.45	6.25	6.01	5.96	5.71	5.85	5.37	5.26	5.14	4.71	tCO ₂			
	Other Sectors	Waste													tCO ₂ e	
		N. LULUCF Net Emissions	20.80	19.54	19.02	18.10	17.48	16.63	15.43	14.94	14.29	13.76	ktCO ₂			
		Other (specify in 'Comments')														

Table 1c															
Source	Dataset	Sector	2005	2006	2007	2008	2009	2010	2011	2012	2013	2014	Units	Comments	
Other	DECC Sectors	Total Emissions													
		Industry and Commercial													
		Domestic													
		Transport total													
		Per Capita													
	Other Sectors	Waste													
		N. LULUCF Net Emissions													
		Other (specify in 'Comments')													

Q2a – Targets

Please detail your wider influence targets

RPP Sector	Action Type	Description	Type of Target (units)	Baseline value	Start year	Target saving	Target / End Year	Saving in latest year measured	Latest Year Measured	Comments
Transport	Behavioural	Continued rollout of Bikeability training to East Renfrewshire schools. Aims to reduce reliance on private transport to schools from parents and to promote greener travel alternatives. Hope to increase amount of school pupils cycling and/or walking.	Other (specify in Comments)		2015		2017			Percentage of East Renfrewshire schools completing on road training. 10% increase from baseline year to 2018. Reduce emissions and make savings over time. Improve air particularly around schools. Contained within ESAP 2015-18: http://www.eastrenfrewshire.gov.uk/green-policies-and-report
Rural Land Use	Afforestation and reforestation	Number of hectares of greenspace in East Renfrewshire improved. Has an influence on carbon sequestration and carbon reduction by utilising land for greenspace instead of construction. Has wider environmental benefits to environment, ecology and habitats. Water retention and promotion of vegetation growth.	Other (specify in Comments)		2015		2017			Unit of measurement - hectares. 12 hectares developed by 2018. Contained within ESAP 2015-18: http://www.eastrenfrewshire.gov.uk/green-policies-and-report
All Sectors	Behavioural	Number of schools maintaining Eco-schools Green Flag Status.	Other (specify in Comments)		2014		2017			Number of schools. Currently 31, with aim to have all 35 schools by 2018.
Homes and Communities	Energy Efficiency - Combined	100% of council housing stock will be energy efficient by 2018	Other (specify in Comments)		2015		2017			% value of housing stock
Transport	Modal Shift - Private Vehicle to Active Travel (Cycling/Walking)	Increase in cycling over council area and council estate.	Other (specify in Comments)		2015		2017			measured by number of cyclists passing through programme sites over count period.

Q2b) Does the Organisation have an overall mission statement, strategies, plans or policies outlining ambition to influence emissions beyond your corporate boundaries? If so, please detail this in the box below.

The Council does not rely on the DECC data outlined above to measure progress in terms of influencing emissions beyond our corporate boundaries.

Certain aspects of the policies, strategies and plans listed below make a positive contribution to climate change mitigation and adaptation.

- ◆ Environmental Sustainability Strategy 2015/16 - 17/18
- ◆ Environmental Sustainability Action Plan 2015/16 - 17/18
- ◆ Local Development Plan & Supplementary Planning Guidance
- ◆ Local Housing Strategy 2012-17
- ◆ Environmental Sustainability Policy Statement
- ◆ East Renfrewshire Council - Single Outcome Agreement
- ◆ East Renfrewshire Council - Corporate Statement 2013-17
- ◆ Local Transport Strategy

Q3) Policies and Actions to Reduce Emissions

RPP Sector	Action Type	Description	Start year for policy / action implementation	Year that the policy / action will be fully implemented	Annual CO2 saving once fully implemented (tCO2)	Latest Year measured	Saving in latest year measured (tCO2)	Status	Metric / indicators for monitoring progress	Delivery Role	During project / policy design and implementation, has ISM or an equivalent behaviour change tool been used?	Please give further details of this behaviour change activity	Value of Investment (£)	Ongoing Costs (£/year)
All Sectors	Other (please specify in comments)	<p>ENVIRONMENTAL SUSTAINABILITY POLICY STATEMENT</p> <p>The Council's commitment to Environmental Sustainability is outlined in the Environmental Sustainability Strategy and Action Plan 2015/16 – 2017/18. These address environmental sustainability in general and climate change and carbon reduction in particular; focusing on the environmental aspects of sustainable development to complement other strategies that are in place to address social issues and economic development.</p>	2016					In Implementation	<p>Varied.</p> <p>Please refer to 2a for indicators.</p>	Direct	No			

Environmental Sustainability Statement East Renfrewshire Council's Environmental Sustainability Statement underpins the council's Environmental Sustainability Strategy 2015/16 – 2017/18 and associated Action Plan. This Statement is a commitment to reduce the impacts the Council's activities may have on environmental sustainability by ensuring that the Council:

- Complies with all relevant legislation and regulations
- Minimises environmental impacts where possible
- Protects and enhances the natural and built environment
- Protects natural habitats and biodiversity where possible
- Prevents pollution and minimises environmental risks and
- Promotes the benefits of a healthy, attractive environment

Scope
This Statement applies to all activities undertaken directly by or on behalf of East Renfrewshire Council.
Statement review

This Statement will be made public and progress reported annually through the Environmental Sustainability Action Plan 2015/16 – 2017/18.

Summary

		The council is committed to environmental sustainability and will ensure this is viewed as a priority in all of our operations wherever it is cost effective and feasible to do so.											
--	--	---	--	--	--	--	--	--	--	--	--	--	--

All Sectors	Other (please specify in comments)	<p>ENVIRONMENTAL SUSTAINABILITY STRATEGY & ACTION PLAN 2015-18</p> <p>The Environmental Sustainability Strategy 2015/16-2017/18 strengthens the Council's commitment to the environmental aspects of sustainable development; this strategy complements other Council strategies that are in place to address the social and economic aspects.</p> <p>The Council's carbon management and climate change commitments are incorporated within this strategy and the accompanying action plan.</p> <p>The Environmental Sustainability Action Plan 2015/16 to 2017/18 was developed to underpin the Council's Environmental Sustainability Strategy 2015/16 to 2017/18.</p> <p>The Action Plan details specific activities that will be undertaken; it will be used to monitor progress towards addressing environmental sustainability, climate change and carbon reduction.</p> <p>The Action Plan is set out under three distinct themes: Sustainable Council, Sustainable Environment and Sustainable Communities.</p>	2015					In Implementation		Direct	No			
-------------	------------------------------------	--	------	--	--	--	--	-------------------	--	--------	----	--	--	--

Please provide any detail on data sources or limitations relating to the information provided in Table 3

PLEASE NOTE: The Council is not currently using the carbon footprinting methodology required to satisfy all requirements within the Public Sector Climate Change Duties Report Template, which means effective and meaningful comparison between years is not currently possible. The current Environmental Sustainability Strategy and Action Plan (ESSAP) is due for renewal in 2017/18, the aim is to align internal environmental sustainability/climate change reporting with the requirements set out in the Public Sector Climate Change Duties Report Template. Please refer to Q2f Top 5.

Q4) Partnership Working, Communication and Capacity Building.
Please detail your Climate Change Partnership, Communication or Capacity Building Initiatives below.

Key Action Title	Action Type	Organisation's project role	Lead Organisation (if not reporting organisation)	Private Partners	Public Partners	3rd Sector Partners	Outputs	Value to Organisation	Total Investment in Partnership
Capacity Building (ie. staff training and development initiatives)	Awareness Raising	Lead			Home Energy Scotland (HES)		Advice and guidance to the public, particularly in Fuel Poverty areas. Providing some information for e-learning for council staff.	Medium	Medium
Education	Behaviour Change	Lead			Eco-Schools (Keep Scotland Beautiful).		Presentations and Workshops to Primary Schools and High Schools. Based on Energy Efficiency, Carbon, Climate Change and Waste & Recycling. Recently additional presentations have been conducted on Sustainability.	High	High
Capacity Building (ie. staff training and development initiatives)	Learning/Training	Lead			Resource Efficient Scotland (RES)		Providing information and advice for running staff training, toolbox talks and engagement. Has also provided Green Champions training for those in the organisation who wish to sign up.	Medium	Medium

Q4) Partnership Working, Communication and Capacity Building.
 Please detail your Climate Change Partnership, Communication or Capacity Building Initiatives below.

Key Action Title	Action Type	Organisation's project role	Lead Organisation (if not reporting organisation)	Private Partners	Public Partners	3rd Sector Partners	Outputs	Value to Organisation	Total Investment in Partnership
Partnership Working	Awareness Raising	Supporting			Neilston Development Trust (NDT)		Provide cycle opportunities, training and information. Gives opportunities for staff and residents to cycle, improve health and fitness, and discover more of East Renfrewshire NDT now cycle friendly employer assessor for ERC. They also now provide Dr bike sessions and cycle advice top staff and public when required.	High	High
Communications	Awareness Raising	Participant	Barrhead Melo Velo (BMV) (Part of East Renfrewshire Council)		Barrhead Melo Velo (BMV)		Provide training and support to people with disabilities, or previous offenders. Recycles and reconditions bicycles to be sold and donated to relevant charities.	High	High

Q4) Partnership Working, Communication and Capacity Building.
 Please detail your Climate Change Partnership, Communication or Capacity Building Initiatives below.

Key Action Title	Action Type	Organisation's project role	Lead Organisation (if not reporting organisation)	Private Partners	Public Partners	3rd Sector Partners	Outputs	Value to Organisation	Total Investment in Partnership
Communications	Intra organisational communications	Lead			National Campaigns championed by external organisations, charities and NDPBs		THINK GREEN ENVIRONMENTAL CAMPAIGN - http://www.eastrenfrewshire.gov.uk/thinkgreen : Our 'Think Green' campaign has been developed to help council employees and local people get involved with sustainability, to promote our green activities, to support the development of green work-practices across council services, and to inform people on how to be greener. Think Green is also designed to help improve upon our current duties as a council, which include: <ul style="list-style-type: none"> ◆ Promoting recycling and waste reduction. ◆ Improving energy efficiency in council buildings and housing. ◆ Addressing fuel poverty and helping local people reduce their energy consumption. ◆ Encouraging sustainable transport. ◆ Promoting and encouraging healthy activities and lifestyles across East Renfrewshire. 	High	High

OTHER NOTABLE REPORTABLE ACTIVITY

Q5) Please detail key actions relating to Food and Drink, Biodiversity, Water, Procurement and Resource Use in the table below.

Key Action Title	Key Action Description	Organisation's Project Role	Impacts	Comments
Other	Our outdoor access and green networks team contribute towards planning of local active travel network; working with roads department identifying strategic active travel routes. Examples include development of Newton Mearns Cycle Network Spatial Mapping project (currently underway), Barrhead Community Streets Action Plan (currently in planning) and ongoing contributions towards ERCs Active Travel Action Plan. The latter will be reflected in the upcoming Local development Plan 2	Lead	Development and promotion of green networks and active travel for East Renfrewshire. Improve biodiversity and limit infrastructure impacts. Allow public better access to green spaces and to better enjoy local biodiversity and environment.	'Other' has been selected than one facet of Sustain
Other	Active Travel route development; identifying opportunities to create or enhance active travel routes in East Renfrewshire. Examples include the Aurs Road active corridor between Barrhead and Newton Mearns, the Barrhead West Green Link (feasibility study to develop former railway line in Barrhead) and supporting local Development Trusts for the creation of a Uplawmoor to Neilston link route along the former railway line. There are also various cross boundary routes on our radar between Glasgow, Renfrewshire, South Lanarkshire and East Ayrshire.	Lead	Development and promotion of green networks and active travel for East Renfrewshire. Improve biodiversity and limit infrastructure impacts. Allow public better access to green spaces and to better enjoy local biodiversity and environment.	'Other' has been selected than one facet of Sustain
Other	Encourage participation with outdoor activities; Water Works Community wildflower garden and orchard – ongoing programme of events and activities. http://barrheadwaterworks.co.uk/ . There are also the Dams to Darnley Countryside Rangers, Whitelee Countryside Rangers and health walks etc	Lead		'Other' has been selected than one facet of Sustain
Other	Lead on projects to enhance existing greenspace; examples include recent application to Heritage Lottery Fund for Cathcart Cemetery Conservation & Restoration project (still to be determined), environmental enhancements at Shawwood Crescent greenspace in Newton Mearns (community consultation commence Oct), gateway and placemaking enhancements along the Capelrig Burn path, Development of the Barrhead Green Network (Carlibar Park, Cowan Park, Auchenback greenspaces, Water Works and the links between these spaces), Waterfoot Community Benefit Fund (consultation complete with work likely to start early 2017)	Lead	Deals mainly with biodiversity and conservation of local built heritage and habitats.	'Other' has been selected than one facet of Sustain
Other	Ongoing Town Centre Consultations (i.e. Clarkston) dealing with placemaking projects to make places more attractive.	Lead	Early stages	'Other' has been selected than one facet of Sustain
Biodiversity	Biodiversity enhancements; 'advanced greening' at former Spillers yard at Crossmill Industrial Area, Barrhead (tree planting and wildflower meadow creation). Other examples include the Shawwood Crescent greenspace (outline plans contain tree planting, wildlife margins and urban meadows). Community bulb planting event planned for October in Carlibar Park. □	Lead	Conservation and Biodiversity restoration and improvements of former brownfield and derelict sites.	
Water	SEPA Water Environment Fund project – this will seek to naturalise various waterways, such as the Lavern Water, in order to improve ecological status. This will tie in with environmental and placemaking enhancements where appropriate.	Lead	Water and riparian zone conservation and biodiversity.	Water focussed, but goe
Food & Drink	Our outdoor access and green networks team are working with local groups and organisations to establish the East Renfrewshire Community Food and Growing Network. This is all about a grassroots network to promote local food production and preparation. First event ("Harvest Lunch") being held in September 2016.	Lead	Local food production awareness. Reduction of environmental impacts. More ethical and environmentally friendly food projects.	

Q6) Please use the text box below to detail further climate change related activity that is not noted elsewhere within this reporting template

- ◆ EV POOL CARS: Three EV Vehicles procured and a pilot pool car scheme implemented. Uptake is much better than expected and staff are making good use of the pool carts as an alternative to their own cars for business travel purposes.
- ◆ Agile Working - initiative has been rolled out and it is assumed that business travel savings will be delivered.
- ◆ Energy Efficiency, Cycle to Work, Recycling, e-learning and advice campaigns have been rolled out under our Think Green sustainability campaign - <http://www.eastrenfrewshire.gov.uk/thinkgreen>.
- ◆ Feasibility studies of council areas with District Heating Network potential. Linked with our masterplan areas in order to look for ways to reduce fuel poverty and environmental impacts in SIMD areas, and other areas of East Renfrewshire ready for development. District Heating is being considered by the departmental management team and a strategy is currently being developed.
- ◆ Initial feasibility stages for a potential Solar PV Farm in the Greenhags area, South of Newton Mearns. Potential for the overall site is c30MW – the final figure could be higher or lower once fully detailed analysis is carried out.
- ◆ RES Ambassador Pledge - SMEs: Encourage local Bid businesses to be more resource efficient. Signposting to Resource Efficient Scotland (RES) support. Work with SMEs to improve resource efficiency in East Renfrewshire businesses.
- ◆ Advice to planners and developers in early stages of visitor centre and wakepark at Dams to Darnley development. Assistance from RES to develop report on off-grid energy efficiency and power generation opportunities. Currently being considered by planning team.
- ◆ HEEPS:ABS SIMD AREAS & Funding - £233,199.00 invested in East Renfrewshire for 15/16
- External Wall Insulation rollout: A total of 46 units were completed, of which 21 are owners and 25 ERC properties as part of our HEEPS:ABS efforts to ensure properties are more energy efficient.
- Cavity Wall Insulation and Loft Insulation top-up project: 38 CWI's and 11 Loft top up's completed by HES/Everwarm as part of our HEEPS:ABS efforts to ensure properties are more energy efficient.
- Transport team - In 2015/16 the Roads Service was successful in attracting external funding of £961,032 for various projects which contribute to the Local Transport Strategy.
- ◆ Fuel Poverty & Affordable Warmth achievements:
 - The Council has arranged for the inclusion of a Home Energy Scotland flier in the annual Council Tax statement. This flier will specifically target the 5,000 households in receipt of Council Tax reduction. It will provide a unique opportunity to reach out to low income households and engage with the so-called 'working poor'. The Council has further promoted Home Energy Scotland through the inclusion of an alternative leaflet in rent increase correspondence, delivered to all Council tenants at the end of February 2016.
 - Through updates in the Council's energy advice pages, we have been able to improve signposting to a range of local and national support and services. There has been specific information added for those who may be struggling to manage their energy bills, in an attempt to reach out to vulnerable residents and those at risk of fuel poverty. The website also provides detailed information on energy efficiency measures and signposts residents to government-funded advice agency Home Energy Scotland.
 - We have been distributing and promoting the use of energy monitors for residents to better understand their electricity consumption. The monitors have been made available to various council services, housing associations and CAB to lend to interested clients. Each service is responsible for lending the monitors to clients and for ensuring that they remain in good working order. Feedback from services has so far been positive and it is recommended that a review of the initiative be carried out at a later date to evaluate client responses.
 - The information provided to new tenants at the point of sign up was reviewed and recommendations were made for potential improvements. Up-to-date and relevant energy advice was notably lacking in the materials issued to new tenants. The point of sign up has been more widely acknowledged as an important time to offer residents advice and information in order to prevent issues at a later stage and help them to avoid falling into arrears with energy bills.
 - The Council worked in conjunction with the Dunterlie Tenants Action Group to organise a winter information event. The event aimed to offer targeted energy advice to the area and allow residents to access wider information from Council and partner services. The Council also hosted a 'Doug the Caterpillar' knitting and energy advice event in partnership with local business The Knitting Bee and Home Energy Scotland. The event allowed us to promote related services as well as creative solutions for staying warm for less.
 - We have established and promoted a clear referral pathway to Home Energy Scotland. This offers a direct route to support and allows Council and partner services to monitor outcomes. There were 18 residents referred following the Affordable Warmth Survey, a number of which were able to receive beneficial advice and support from HES, including instruction on how to use heating systems and assistance with applying for the Warm Home Discount. Referral to Home Energy Scotland has been broadly promoted to Council and partner services to allow residents to receive additional support and access available schemes.

- Relevant frontline staff received Home Energy Scotland training. This was specifically targeted at Connor Road and Overlee key workers to improve the support offered to their vulnerable clients. The sessions were unfortunately limited due to poor staff uptake. Any future training would require support from management and adapted materials to suit department needs.

- FAIRer has provided an opportunity to forge links with a variety of Council and partner services. It has offered a platform for the free exchange of information and has helped to ensure resources kept are relevant and up-to-date. I had the chance to present to the forum to raise awareness of the project and promote the consultation as well as associated events. It is recommended that attendance at FAIRer continues after the project has ended.

◆

BLANK PAGE