

EAST RENFREWSHIRE COUNCIL

EDUCATION COMMITTEE

TUESDAY 30 SEPTEMBER 2014

Report by Director of Education

FUTURE DENOMINATIONAL (CATHOLIC) PRIMARY SCHOOL WITH NON-DENOMINATIONAL PREFIVE PROVISION IN NEWTON MEARNES; AND RELOCATION OF CALDERWOOD LODGE PRIMARY SCHOOL AND NURSERY CLASS TO WATERFOOT ROAD, NEWTON MEARNES: FROM SESSION 2017-18 AND BEYOND

**PURPOSE OF THE REPORT**

1. To seek approval to consult on a proposal on the provision of a new denominational (Catholic) primary school and prefive provision in Newton Mearns; and the relocation of Calderwood Lodge Primary School and Nursery Class as part of a faith schools' joint campus should the proposed site at Waterfoot Road be deemed suitable. The proposal would take effect from school session 2017 – 2018.

**RECOMMENDATION**

2. Members are asked to approve that the Director of Education proceeds with a consultation on a proposal, which would take effect from school session 2017 – 2018 concerning the provision of a new denominational (Catholic) primary school and prefive provision in Newton Mearns; and the relocation of Calderwood Lodge Primary School and Nursery Class as part of a faith schools' joint campus should the proposed site at Waterfoot Road be deemed suitable.

**BACKGROUND**

3. The Council is required to consult formally on a proposal to establish a new school/nursery, change a delineated catchment area and changes to the admission arrangements or the relocation of any school. How this is carried out and who must be consulted is clearly set out in the Schools Consultation (Scotland) Act 2010 which came into force in April 2010.

4. St Cadoc's Primary is the only denominational (Catholic) primary school serving the Newton Mearns area. There is pressing need for an additional denominational (Catholic) primary school in the Newton Mearns area and provision for a site is included in the proposed Local Development Plan (LDP).

5. During the modification process of the proposed LDP, an alternative site for a school at Waterfoot Road, Newton Mearns was put forward. In addition to building the required new Catholic primary school, this site affords the possibility of relocating Calderwood Lodge Primary School and the establishment a faith schools' joint campus. The campus approach can only be considered at this site.

6. In April 2014, the Council submitted the proposed LDP (as modified) to Scottish Ministers for examination. The current timescale as advised by the Environment Department

(Planning Section) is that the Council is expected to know the outcome of the proposed LDP late in 2014 through the Reporter. It will be at this stage that the Council will know whether the Reporter deems the Waterfoot Road site acceptable as a school site and so facilitate the establishment of a faith schools' joint campus.

7. If the Reporter deems the Waterfoot Road site not acceptable as a school site, and following the consultation exercise the decision is made to agree the proposal, then Calderwood Lodge Primary School would remain located at its current site and the new denominational (Catholic) primary with non-denominational prefive provision would be established at Maidenhill in Newton Mearns.

8. In considering the prospect of a faith schools' joint campus, an informal consultative exercise to explore the possibility and affordability of establishing a campus was undertaken in late 2013 with key groups / leaders of the Catholic and Jewish communities. The results were reported to Education Committee in January 2014 noting the positive outcome of the engagement with both communities being in favour of the proposal to establish a campus.

9. The Catholic and Jewish communities agreed a number of points in establishing a campus:

- (a) The need for each school to continue with its own identity and ethos and the importance of respect for each faith.
- (b) One building with shared internal facilities and separate classroom wings where each school would undertake their main learning and teaching.
- (c) Separate pupil entrances to each wing would be desirable, external grounds would be shared.
- (d) Areas such as playground, dining and general-purpose spaces for example sports and music could be shared.
- (e) The need for kosher facilities.

10. Provision has been made in the current 8-year Capital Plan to construct the new denominational (Catholic) primary with prefive provision (£10 million), with an additional £3.6 million being allocated to relocate Calderwood Lodge Primary School and Nursery Class as part of a campus.

11. The next stage in taking forward the proposal is to undertake an education statutory consultation, which this report relates to.

## **REPORT**

12. All councils must ensure effective management of their school places and have a statutory duty to provide sufficient pupil places for their resident population under education legislation.

13. Pupil numbers at St Cadoc's Primary School have increased by 30% since 2001-02 to 662 pupils in 2014-15.

14. The school was built as 2-stream (2 class P1 intake) and has been extended to its current 3-stream provision. The current occupancy is 100% and for session 2014-15 the P1

catchment required 4 classes. Interim measures have been taken to accommodate this increased intake for August 2014 (use of a general purpose ICT room as a class base).

15. There are a number of planned residential units in the St Cadoc's catchment area that will further increase pressure on places at the school. The projections indicate that the demand for denominational (Catholic) primary school education in Newton Mearns warrants 4-streams.

16. At present St Cadoc's Primary School operates on a very busy site, and it is not considered a viable option to extend the existing school any further. There is not scope to realign catchments with the other 2 denominational primary schools in the east of the authority area to alleviate the need for new provision. A new denominational (Catholic) primary school is required as an immediate priority to meet needs.

17. It is proposed that the existing St Cadoc's delineated catchment area is subdivided, St Cadoc's reduced to a 2-stream school and a new denominational (Catholic) primary school be established comprising 2 streams. The existing St Cadoc's delineated catchment would then be served by two 2-stream primary schools, thereby increasing the denominational (Catholic) places by 1-stream.

18. In reducing St Cadoc's to 2-stream provision, there are plans to remodel part of the school to establish a nursery class (non-denominational) as noted in the November 2013 Education Committee report about prefive provision in Newton Mearns and Busby/Clarkston. This would be subject to a subsequent statutory consultation.

19. If a change to the St Cadoc's delineated catchment area was ultimately approved, the additional new denominational (Catholic) primary would be associated with St Ninian's High School, alongside the current associated primary schools namely St Cadoc's, Our Lady of the Mission's and St Joseph's. St Ninian's High School delineated catchment area would not change under this proposal.

20. Although there is a need to increase primary denominational (Catholic) places in the area, there are sufficient places at St Ninian's High School to meet catchment places from these primary schools. St Ninian's High School has an S1 intake equivalent to the 10-streams that are proposed, which would meet catchment demand.

21. Calderwood Lodge Primary is the only Jewish denominational school in Scotland. It is managed by East Renfrewshire Council, although it is located within the Newlands area of Glasgow City Council and its community in the past has sought relocation to East Renfrewshire.

22. It is a 1-stream primary and all admissions must be made by a placing request. Pupils from Calderwood Lodge who live within East Renfrewshire automatically transfer to Mearns Castle High School.

23. Over the 5 years to 2013-14, the school roll has been around 150 pupils. During this period the number of children attending the school and residing in East Renfrewshire has decreased from 92 to 52; and those residing out with the Council have risen from 53 to 92.

24. Over the same period, the percentage of Jewish pupils has decreased from 69% to 48%. In 2013-14 79% of the East Renfrewshire resident children who attend the school are of

the Jewish faith; whilst those children at the school residing out with the authority are mainly not of the Jewish faith (70%).

25. It is considered that relocating Calderwood Lodge Primary School into the authority at a site near its East Renfrewshire associated secondary school would help sustain and support the Jewish community. The relocated Calderwood Lodge Primary would have the same planning capacity at 1-stream and a 40:40 place nursery class, as is at present, continuing to be managed by the head teacher of the school. Mearns Castle High School would not be affected.

26. The Council also has a statutory duty to make adequate and efficient provision for preschool education for its area in respect of certain children. These children are defined as 'prescribed' preschool children. A preschool child is prescribed during the period from the school term following their third birthday until the end of the school term before they are first eligible to attend primary school.

27. The Council publication, *Planning for East Renfrewshire's Future, Key Demographic Trends (August 2014)*, indicates a continuing growth in East Renfrewshire of preschool children and predicts an increase of 19.7% in the under 5 population from 2008 to 2025. It also indicates a 2.3% increase in primary age population during the same period.

28. Under the proposal there would be an increased number of prefive places in Newton Mearns, which would help to meet the demands of the residents in the area for local provision. The additional prefive places would also build capacity across the area allowing for more opportunity to meet the demand for wraparound sessions, especially given the entitlement for 600 hours of early learning and childcare including providing an element of flexibility.

29. It is considered that the proposal has a number of educational benefits which are outlined in the Educational Benefits Statement section (paragraphs 50 to 82) in the attached consultative proposal document.

30. Were the proposal to be adopted, the Education Department would move to provide appropriate staffing for the new denominational (Catholic) primary school. This process would be undertaken and managed by the Head of Education Services (Inclusion, Schools and Staff). Consultation with unions would ensure that the interests of staff are considered.

31. It is proposed that the faith schools' joint campus would comprise one building, but two schools each having their own head teacher, nursery classes and Parent Councils.

32. In designing and taking forward new school provision, the Education Department would work with parents/carers, pupils, key groups / leaders of the Catholic community (and Jewish community should the campus ultimately be possible and gain approval) and the local community. From February 2015 onwards the specific design brief would be agreed which would take account of the points already established (paragraph 9 above) should a campus be developed and consider those expressed during this consultation.

33. The proposal would address the known deficit in denominational (Catholic) primary school places in Newton Mearns and, depending on the outcome of the Waterfoot Road site from the Reporter, be able to facilitate the relocation of Calderwood Lodge to East Renfrewshire.

## **FINANCIAL AND EFFICIENCY IMPLICATIONS**

34. As indicated above, the Council has included provision of £10 million for a denominational (Catholic) primary school and prefive facilities within its current 8-year Capital Plan. The extra funding of £3.6m to deliver instead a faith schools' joint campus has also been included in the Capital Plan.

35. Further detail on the revenue impact is included in the section on Financial Considerations in paragraphs 109 to 116 in the attached consultative proposal document.

## **CONSULTATION**

36. The purpose of this paper is to seek elected member approval to undertake a consultation exercise as is required by the Schools Consultation (Scotland) Act 2010.

37. Note on Corrections: If any inaccuracy or omission was discovered in the Proposal Document either by the Education Department, or any person, the department would determine if relevant information has been omitted or, if there had been an inaccuracy. The Education Department would then take appropriate action which may include the issue of a correction or the reissuing of the Proposal paper or the revision of the timescale for the consultation period as appropriate. In that event, relevant consultees and Education Scotland would be advised.

## **IMPLICATIONS OF THE PROPOSAL**

38. The implications of the proposal await the outcome of the consultation. The Director of Education will report the results of this consultation exercise, including the report submitted by Education Scotland, to the Education Committee on 5 February 2015.

39. If, following the consultation exercise the decision is made to agree the proposal and the Waterfoot Road site is deemed suitable as a school site then from school session 2017-18 onwards it is proposed to:

- (a) Establish a faith schools' joint campus at Waterfoot Road.
- (b) Relocate Calderwood Lodge Primary and Nursery Class to the faith schools' joint campus.
- (c) Establish a new denominational (Catholic) primary school with prefive (non-denominational) provision on the faith schools' joint campus and thereby expand primary denominational and local authority nursery provision in Newton Mearns.
- (d) Amend the delineated catchment of St Cadoc's Primary School to that shown in Appendix 6(a). This also shows the corresponding delineated catchment for the new denominational primary school. Children living in the newly defined catchment area and currently attending St Cadoc's Primary would have the option of transferring to the new denominational school or remaining where they are. Once the new school is open, any new P1 registrations and pupils moving into its delineated catchment would attend the new school.
- (e) Reduce St Cadoc's Primary School from a 3-stream to a 2-stream primary school. The accommodation would be remodelled with plans to establish a nursery class (non-

denominational) at St Cadoc's as noted in the November 2013 Education Committee report about prefive provision in Newton Mearns and Busby/Clarkston. This would be subject to a subsequent statutory consultation.

- (f) The new denominational (Catholic) primary school would be an associated primary to St Ninian's High School in addition to the existing three primary schools, namely Our Lady of the Missions, St Cadoc's and St Joseph's.
- (g) To thereafter close the existing building used by Calderwood Lodge Primary School and Nursery Class.

40. If, following the consultation exercise the decision is made to agree the proposal and the Waterfoot Road site is not deemed suitable as a school site then Calderwood Lodge Primary School would remain located at its current site. In this case from school session 2017-18 it is proposed to:

- (a) Establish a new denominational (Catholic) primary school with prefive (non-denominational) provision at Maidenhill and thereby expand primary denominational and local authority nursery provision in Newton Mearns.
- (b) Amend the delineated catchment of St Cadoc's Primary School to that shown in Appendix 6(b). This also shows the corresponding delineated catchment for the new denominational primary school. Children living in the newly defined catchment area and currently attending St Cadoc's Primary will have the option of transferring to the new denominational school or remaining where they are. Once the new school is open, any new P1 registrations and pupils moving into its delineated catchment would attend the new school.
- (c) Reduce St Cadoc's Primary School from a 3-stream to a 2-stream primary school. The accommodation would be remodelled with plans to establish a nursery class (non-denominational) at St Cadoc's as noted in the November 2013 Education Committee report about prefive provision in Newton Mearns and Busby/Clarkston. This would be subject to a subsequent statutory consultation.
- (d) The new denominational (Catholic) primary school would be an associated primary to St Ninian's High School in addition to the existing three primary schools, namely Our Lady of the Missions, St Cadoc's and St Joseph's.

41. This proposal is not subject to ministerial call in.

42. East Renfrewshire Council's legal section has been fully involved and is aware of the proposal and consequential outcomes for the Council.

## **CONCLUSIONS**

43. St Cadoc's Primary is the only denominational (Catholic) primary school serving the Newton Mearns area. The school is at 100% occupancy and catchment numbers are increasing.

44. To enable the Council to meet its statutory duty to provide sufficient pupil places, and provide increased prefive places to meet local needs and the Council's duties under the Children and Young People (Scotland) Act 2014, there is a need to increase denominational (Catholic) primary school places and local authority prefive provision in Newton Mearns.

45. Depending on the outcome of the Reporter of the proposed LDP (as modified) a site at Waterfoot Road, Newton Mearns would be available for a school site. This site affords the possibility of relocating Calderwood Lodge Primary School and Nursery Class and to establish a faith schools' joint campus with the new Catholic primary school. The campus approach can only be considered at this site.

46. It is considered that relocating Calderwood Lodge Primary School into the authority at a site near its East Renfrewshire associated secondary school would help sustain and support the Jewish community.

47. Should Waterfoot Road not be deemed suitable as a school site, then the site for the proposed new Catholic primary school with prefive provision would be at Maidenhill in Newton Mearns. With the Maidenhill site, Calderwood Lodge would remain in its current location.

48. Legislation requires the Council undertake a statutory consultation on the proposed changes.

## **RECOMMENDATION**

49. Members are asked to approve that the Director of Education proceeds with a consultation on a proposal, which would take effect from school session 2017 – 2018 concerning the provision of a new denominational (Catholic) primary school and prefive provision in Newton Mearns; and the relocation of Calderwood Lodge Primary School and Nursery Class as part of a faith schools' joint campus should the proposed site at Waterfoot Road be deemed suitable.

Mhairi Shaw  
Director of Education  
30 September 2014

### Convener Contact Details

Councillor E Green, Convener for Education and Equalities  
Councillor P O'Kane, Vice Convener for Education and Equalities

Tel: Home 01505 850455  
Tel: Mobile 07718 697115

Local Government Access to Information Act 1985

### Report Author

Fiona Morrison, Head of Education Services  
Tel: 0141 577 3229

[Fiona.Morrison@eastrenfrewshire.gov.uk](mailto:Fiona.Morrison@eastrenfrewshire.gov.uk)

### Background Papers

1. Report on the Exploration of a Joint Faith School Campus, Education Committee, 23 January 2014
2. Report on Prefive Provision in Newton Mearns and Busby/Clarkston, 14 November 2013
3. Exploration of a Joint Faith School Campus, Education Committee, 3 October 2013
4. Proposed Modifications to the Local Development Plan, East Renfrewshire Council, 11 September 2013

### Key Words

This paper is about the statutory consultation on denominational (Catholic) primary school provision with non-denominational prefive provision in Newton Mearns and the possible relocation of Calderwood Lodge Primary School and Nursery Class to the same site to establish a Faith Schools' Joint Campus with the proposed new Catholic primary school.

Key Words include:

Faith Schools' Joint Campus, Catholic and Jewish communities, denominational primary school, prefive provision, nursery, Calderwood Lodge, St Cadoc's, Waterfoot Road, Maidenhill, Newton Mearns

**EAST RENFREWSHIRE COUNCIL : EDUCATION DEPARTMENT**

**THIS IS A FORMAL CONSULTATIVE DOCUMENT**

**FUTURE DENOMINATIONAL (CATHOLIC) PRIMARY SCHOOL WITH NON-DENOMINATIONAL PRE-FIVE PROVISION IN NEWTON MEARNES; AND RELOCATION OF CALDERWOOD LODGE PRIMARY SCHOOL AND NURSERY CLASS TO WATERFOOT ROAD, NEWTON MEARNES: FROM SESSION 2017-18 AND BEYOND**

**SEPTEMBER 2014**

This document has been issued by the Education Committee of East Renfrewshire Council for consultation in terms of the Schools Consultation (Scotland) Act 2010.



## **EAST RENFREWSHIRE COUNCIL : EDUCATION DEPARTMENT**

### **FUTURE DENOMINATIONAL (CATHOLIC) PRIMARY SCHOOL WITH NON-DENOMINATIONAL PRE-FIVE PROVISION IN NEWTON MEARNES; AND RELOCATION OF CALDERWOOD LODGE PRIMARY SCHOOL AND NURSERY CLASS TO WATERFOOT ROAD, NEWTON MEARNES: FROM SESSION 2017-18 AND BEYOND**

1. St Cadoc's Primary is the only denominational (Catholic) primary school serving the Newton Mearns area. There is pressing need for an additional denominational (Catholic) primary school in the Newton Mearns area and provision for a site is included in the proposed Local Development Plan (LDP).
2. During the modification process of the proposed LDP, an alternative site for a school at Waterfoot Road, Newton Mearns was put forward. In addition to building the required new Catholic primary school, this site affords the possibility of relocating Calderwood Lodge Primary School and the establishment a faith schools' joint campus. The campus approach can only be considered at this site. The Council is expected to know the outcome of the proposed LDP in late 2014 through the Reporter.

#### PURPOSE OF THE CONSULTATION

3. To consult on the provision of a new denominational (Catholic) primary school with non-denominational pre-five provision in Newton Mearns; and consult on the relocation of Calderwood Lodge Primary School and Nursery Class to Newton Mearns should the proposed site at Waterfoot Road be deemed suitable.
4. If the Waterfoot Road site in Newton Mearns is deemed acceptable as a school site the purpose is:
  - (a) To consult on the proposal to establish a faith schools' joint campus at Waterfoot Road, Newton Mearns from session 2017-18 and beyond.
  - (b) The faith schools' joint campus would:
    - i. establish a new denominational (Catholic) primary school and thereby expand primary denominational provision in Newton Mearns;
    - ii. establish a new nursery class (non-denominational) at the new school; and
    - iii. facilitate the relocation of Calderwood Lodge Primary School and Nursery Class to the same site.
  - (c) To close the existing building used by Calderwood Lodge Primary School and Nursery.
5. If the Waterfoot Road site in Newton Mearns is not deemed acceptable as a school site, the consultation concerns the proposal to establish a new denominational (Catholic) primary school at Maidenhill, Newton Mearns with a new nursery class (non-denominational).
6. Under either option the existing delineated catchment area of St Cadoc's would be split to establish two delineated catchment areas: one for the proposed new denominational (Catholic) primary school, and one for St Cadoc's Primary School, which would reduce

to a 2-stream (P1-intake) school. In addition the new denominational (Catholic) primary school would be an associated primary to St Ninian's High School alongside the existing three primary schools, namely Our Lady of the Missions, St Cadoc's and St Joseph's.

## INTRODUCTION

### *Background*

7. East Renfrewshire Education Department is committed to *Everyone Attaining, Everyone Achieving through Excellent Experiences*, and has a well earned reputation for providing an excellent education for primary school children. This is borne out in the reports received on our schools following inspection by Education Scotland.
8. All councils must ensure effective management of their school places and have a statutory duty to provide sufficient pupil places for their resident population under education legislation.
9. Since the inception of East Renfrewshire Council, ensuring that there are sufficient school and prefive places has been a main driver for change in the school estate. The Council has made significant investment with new builds and extensions to address this need, and new provision has been taken forward recognising the importance of the environment to support quality learning and teaching and provide community facilities.
10. It is evident that the educational estate has been developed to date to ensure there is sufficient school capacity in accordance with developments listed in the current finalised East Renfrewshire Local Plan and previous Local Plans.
11. The proposed Local Development Plan (LDP) process acknowledges that there needs to be a phased approach to housing developments, which will ensure a continuous supply of land and infrastructure is in place. Key infrastructure includes the need to ensure adequacy of school places and prefive provision. Educational provision will be driven by the phasing of the resulting housing developments ultimately taken forward, the scale and type of housing, along with other factors that influence the number of children and young people in schools and nurseries such as class size legislation, to determine the extent of new provision required.
12. The M77 Strategic Development Opportunity (SDO) is the largest development within the proposed LDP. The proposed LDP is clear on the extent of the additional school infrastructure required to meet future demand as a result of the M77 Strategic Development Opportunity in Newton Mearns and Barrhead. The SDO masterplan notes for Newton Mearns:
  - Education facilities – On site provision of 2 primary schools (non-denominational and denominational) and associated prefive provision would be required as an early priority.
13. The Council publication, *Planning for East Renfrewshire's Future, Key Demographic Trends (August 2014)*, indicates a continuing growth in East Renfrewshire of preschool children and predicts an increase of 19.7% in the under 5 population from 2008 to 2025. It also indicates a 2.3% increase in primary age population during the same period.

### *St Cadoc's Primary School*

14. St Cadoc's Primary is the only denominational (Catholic) primary school serving the Newton Mearns area. The school is one of three primaries associated with St Ninian's High School. The locations of St Cadoc's Primary and St Ninian's High are shown on the map in Appendix 1.
15. St Cadoc's Primary School was opened by Strathclyde Regional Council in 1984 and has been extended over the years to its current 3-stream (3 class P1-intake) provision. This situation is due to a number of reasons including, changes in the local population and house building. In 2013-14 the school had a planning capacity of 630 pupils (based on a class size of 30 pupils in primary school; it is noted that from P4 onwards up to 33 pupils can be accepted at each stage and the maximum P1 class size is 25). The school attracts a significant number of placing requests each year.
16. St Cadoc's is currently at 100% occupancy and it is anticipated that pupil roll will very soon exceed the places available. It is not considered possible to extend St Cadoc's to a 4-stream school to meet demand for additional catchment places. Therefore it is proposed that the existing St Cadoc's delineated catchment area is subdivided, St Cadoc's reduced to a 2-stream school and a new 2-stream denominational (Catholic) primary school be established. The existing St Cadoc's delineated catchment would then be served by two 2-stream primary schools, thereby increasing the denominational (Catholic) places by 1-stream. Provision of a site for a new denominational (Catholic) primary school is included in the proposed Local Development Plan.
17. Appendix 2 shows the current delineated catchment area of St Cadoc's Primary School.

### *Calderwood Lodge Primary School*

18. Calderwood Lodge Primary School is the only Jewish primary school in Scotland. The school is located in the Newlands area of Glasgow City Council, and its community has sought relocation to East Renfrewshire. East Renfrewshire Council owns the school and its site, and has operated and managed the school since 1997.
19. Calderwood Lodge Primary School is a 1-stream school and all admissions must be made by a placing request. Pupils from Calderwood Lodge who live within East Renfrewshire automatically transfer to Mearns Castle High School. Parents/Carers of children living out with East Renfrewshire must make a placing request for their child(ren) to attend any East Renfrewshire secondary. The location of these schools is also shown in Appendix 1.

### *Modification to Proposed LDP- Faith Schools' Joint Campus*

20. During the modification process of the proposed LDP, an alternative site for a school at Waterfoot Road, Newton Mearns was put forward. In addition to building the required new Catholic primary school, this site affords the opportunity to explore the possibility of relocating Calderwood Lodge Primary School to the same site and establish a faith schools' joint campus. The campus approach can only be considered at this site.
21. An informal consultative exercise was carried out with key groups / leaders of the Catholic and Jewish communities from October to December 2013 and reported to Education Committee in January 2014. A copy of this report is included as Appendix 3.

22. Both communities were in favour of the proposal to establish a faith schools' joint campus. Both communities agreed that the preservation of the religious context of faith schools was very important and expressed a strong desire to continue to practice and develop their faith at school as is their right.
23. The Catholic and Jewish communities agreed a number of points:
  - i. The need for each school to continue with its own identity and ethos and the importance of respect for each faith.
  - ii. One building with shared internal facilities and separate classroom wings where each school would undertake their main learning and teaching.
  - iii. Separate pupil entrances to each wing would be desirable, external grounds would be shared.
  - iv. Areas such as playground, dining and general-purpose spaces for example sports and music could be shared.
  - v. The need for kosher facilities.
24. The Council has included provision for a denominational (Catholic) primary school with prefive facilities within its current 8-year Capital Plan (£10m). An additional capital resource of £3.6m is also included in the capital plan to take forward a new build Calderwood Lodge Primary School as part of a joint campus.
25. The faith schools' joint campus site at Waterfoot Road is a modification to the Proposed Local Development Plan and the planning process, including submission to the Reporter, will ultimately determine if the Waterfoot site is agreed as a school site and so able to accommodate the proposed faith schools' joint campus.
26. In January 2014, Education Committee instructed the Director of Education to proceed with an education statutory consultation exercise in line with the Schools (Consultation) (Scotland) Act 2010 on the proposal to establish the faith schools' joint campus from session 2017-18 and beyond. It was noted that this was dependent on the Waterfoot site being deemed a suitable school site.
27. In April 2014, East Renfrewshire Council submitted the proposed LDP (as modified) to Scottish Ministers for examination. This plan includes the provision of a denominational primary school with associated prefive provision at Waterfoot Road. The current timescale as advised by the Environment Department (Planning Section) is that East Renfrewshire Council is expected to know the outcome of the submitted proposed LDP late 2014 through the Reporter.
28. If the Reporter deems the Waterfoot Road site not acceptable as a school site, the consultation concerns the proposal to establish a new denominational (Catholic) primary school at Maidenhill, Newton Mearns since this is required to meet catchment demand.
29. East Renfrewshire Council's Single Outcome Agreement outlines the local outcomes which will be delivered for its residents. In particular this proposal would contribute to the realisation of the following outcomes:
  - (a) SOA1: All children in East Renfrewshire experience a stable and secure start to their lives and are supported to succeed.
  - (b) SOA2: East Renfrewshire residents are fit and active and have the skills for learning, life and work.

30. The proposal would also address the Council's duties under the Children and Young People (Scotland) Act 2014 to provide 600 hours of early learning and childcare for every 3 and 4 year old child resident in its area.

## PRESENT POSITION

31. The Scottish Government requires that a census is carried out in all schools at a specific point each year. This is the officially recognised time period to record pupil and staff numbers. It informs funding and is used to compare annual variations. Schools' populations are dynamic and slight variations in the number of pupils during any one school session are to be expected.

### *St Cadoc's Primary School*

32. The official September census roll for St Cadoc's Primary School over the last 5 years is given below:

	<b>2009-10</b>	<b>2010-11</b>	<b>2011-12</b>	<b>2012-13</b>	<b>2013-14</b>
<b>P1-P7</b>	601	626	617	623	629

33. Pupil numbers at St Cadoc's Primary School have increased over this period, from the school having an occupancy of 93% to 100%.
34. The chart in Appendix 4 shows the increase in pupil numbers over the last 13 years. Of the 2013-14 roll, only 54 of the 629 pupils reside out with the authority (placing request); and these are greater in the upper stages, with for example 21 in total across P6/P7, and only 5 across P1/P2 indicating the catchment numbers are increasing.
35. The table below provides additional detail including current maximum P1 capacity and average P1 enrolments from the catchment i.e. catchment pupil demand (based on 2012-13, 2013-14 and 2014-15). The crucial stage in a primary school in seeking to manage the roll is the P1-intake - it is the capacity / availability of places in this stage that best determines the potential for additional pupils to be taken throughout the school.

	<b>Maximum P1 Capacity</b>	<b>Average P1 Enrolments</b>
<b>Number of Pupils</b>	90	98

36. For school session 2014-15 the number of P1 enrolments was over 100. In order to accommodate the P1 intake, a general purpose (ICT) room has been used to provide an additional P1 classroom. It is recognised that this is not a permanent solution. As a result the planning capacity of the school in 2014-15 is 660 pupils (taking account of four classes at P1).
37. In early September 2014 (pre-official census) the school roll of St Cadoc's Primary School was 662 pupils, up from 510 in 2001-02. This represents an increase of 30%.
38. In 1991 a 3-class extension was built at St Cadoc's increasing the 2-stream provision from 14 classes to 17 classes. In 2001 the school was extended to its current status to provide full 3-stream provision (i.e. 21 class bases and associated general purpose spaces).
39. Based on the current information provided by East Renfrewshire Council Planning Section, the number of planned additional residential units that are in the St Cadoc's

catchment is around 850 until 2020 with approximately a further 90 beyond 2020. This excludes the Malletsheugh / Maidenhill Strategic Development Opportunity (SDO) in the proposed LDP.

40. The Malletsheugh / Maidenhill SDO has a notional capacity of 1,060 homes with 450 units phased by 2025 and 610 units post 2025. These are all in the St Cadoc's catchment.
41. Appendix 5 provides a roll projection for the school to 2019-20, which shows that the planning capacity of St Cadoc's Primary School will be exceeded very soon. The projections indicate that the demand for denominational primary school education in Newton Mearns warrants 4-streams or two 2-stream primary schools. This provides 840 pupil places in terms of the planning capacity, or 888 pupil places based on the maximum capacity recognising that P4 to P7 class size maxima is 33 pupils.
42. At present St Cadoc's Primary School operates on a very busy site, and it is not considered a viable option to extend the existing school any further. There is not scope to realign catchments with the other 2 denominational primary schools in the east of the authority area to alleviate the need for new provision. A new denominational (Catholic) primary school is required as an immediate priority to meet needs.

#### *Calderwood Lodge Primary School*

43. The official September census roll for Calderwood Lodge Primary School over the last 5 years is given below. During this period the number of children attending the school and residing in East Renfrewshire has decreased from 92 to 52; and those residing out with the Council has risen from 53 to 92.

	<b>2009-10</b>	<b>2010-11</b>	<b>2011-12</b>	<b>2012-13</b>	<b>2013-14</b>
<b>P1-P7</b>	145	148	159	149	144

44. For session 2014-15 there is a P1 intake of 29 pupils, 10 reside in East Renfrewshire, 19 are from out with. The total school roll was 142 pupils in early September 2014 (pre-official census).
45. Over this 5-year period, the percentage of Jewish pupils has decreased from 69% to 48%. In 2013-14 79% of the East Renfrewshire resident children who attend the school are of the Jewish faith; whilst those children at the school residing out with the authority are mainly not of the Jewish faith (70%).
46. Based on the national census results there has been a drop in people reporting their faith as Jewish in Scotland from 6,448 in 2001 to 5,887 in 2011. This decrease was mirrored in East Renfrewshire with a drop of 727 from 3,126 in 2001 to 2,399 in 2011.
47. It is considered that relocating Calderwood Lodge Primary School into the authority at a site near its East Renfrewshire associated secondary school will help sustain and support the Jewish community. The relocated Calderwood Lodge Primary would have the same planning capacity at 1-stream and a 40:40 place nursery class, as is at present, continuing to be managed by the head teacher of the school.

## PROPOSAL

### *Faith Schools' Joint Campus at the Waterfoot Road Site in Newton Mearns*

48. If the Waterfoot Road site is deemed acceptable as a school site from school session 2017-18 onwards it is proposed to:
- (a) Establish a faith schools' joint campus at Waterfoot Road.
  - (b) Relocate Calderwood Lodge Primary and Nursery Class to the faith schools' joint campus.
  - (c) Establish a new denominational (Catholic) primary school with prefive (non-denominational) provision on the faith schools' joint campus and thereby expand primary denominational and local authority nursery provision in Newton Mearns.
  - (d) Amend the delineated catchment of St Cadoc's Primary School to that shown in Appendix 6(a). This also shows the corresponding delineated catchment for the new denominational primary school. Children living in the newly defined catchment area and currently attending St Cadoc's Primary would have the option of transferring to the new denominational school or remaining where they are. Once the new school is open, any new P1 registrations and pupils moving into its delineated catchment would attend the new school.
  - (e) Reduce St Cadoc's Primary School from a 3-stream to a 2-stream primary school. The accommodation would be remodelled with plans to establish a nursery class (non-denominational) at St Cadoc's as noted in the November 2013 Education Committee report about prefive provision in Newton Mearns and Busby/Clarkston. This would be subject to a subsequent statutory consultation.
  - (f) The new denominational (Catholic) primary school would be an associated primary to St Ninian's High School in addition to the existing three primary schools, namely Our Lady of the Missions, St Cadoc's and St Joseph's.
  - (g) To thereafter close the existing building used by Calderwood Lodge Primary School and Nursery Class.

### *New Denominational (Catholic) Primary School at the Maidenhill site in Newton Mearns*

49. If the Waterfoot Road site is not deemed acceptable as a school site, Calderwood Lodge Primary School would remain located at its current site. In this case from school session 2017-18 it is proposed to:
- (a) Establish a new denominational (Catholic) primary school with prefive (non-denominational) provision at Maidenhill and thereby expand primary denominational and local authority nursery provision in Newton Mearns.
  - (b) Amend the delineated catchment of St Cadoc's Primary School to that shown in Appendix 6(b). This also shows the corresponding delineated catchment for the new denominational primary school. Children living in the newly defined catchment area and currently attending St Cadoc's Primary will have the option of transferring to the new denominational school or remaining where they are. Once the new school is

open, any new P1 registrations and pupils moving into its delineated catchment would attend the new school.

- (c) Reduce St Cadoc's Primary School from a 3-stream to a 2-stream primary school. The accommodation would be remodelled with plans to establish a nursery class (non-denominational) at St Cadoc's as noted in the November 2013 Education Committee report about prefive provision in Newton Mearns and Busby/Clarkston. This would be subject to a subsequent statutory consultation.
- (d) The new denominational (Catholic) primary school would be an associated primary to St Ninian's High School in addition to the existing three primary schools, namely Our Lady of the Missions, St Cadoc's and St Joseph's.

## EDUCATIONAL BENEFITS STATEMENT

- 50. The vision of the Education Department *Everyone Attaining, Everyone Achieving through Excellent Experiences*, is at the heart of the work that department and school staff undertake as they seek to provide the highest quality education and services to develop the whole individual.
- 51. Prefive and primary school experiences are fundamental to the delivery of a broad general education for all children. The aim of *Curriculum for Excellence* is to enable all children and young people to develop their capacities as successful learners, confident individuals, responsible citizens and effective contributors to society. The Department's vision and values embody these aims, which will be furthered as we continue to implement *Curriculum for Excellence*.
- 52. There is a statutory requirement for every education authority to secure, for their area, adequate and efficient provision of school education. East Renfrewshire Council has organised the structure of school provision to ensure that children can attend their local catchment denominational or non-denominational primary, and can then progress to their local secondary school. For almost all secondary schools, the delineated catchment area of the school corresponds to the sum of the catchment areas of the associated primary schools.
- 53. The Council also has a statutory duty to make adequate and efficient provision for preschool education for its area in respect of certain children. These children are defined as 'prescribed' preschool children. A preschool child is prescribed during the period from the school term following their third birthday until the end of the school term before they are first eligible to attend primary school.

### *Proposed New Denominational (Catholic) Primary and New Prefive (Non-Denominational) Provision in Newton Mearns*

- 54. The establishment of a new denominational primary school with prefive provision in Newton Mearns would result in a number of educational benefits. These benefits are not dependent on whether the school is based at Waterfoot Road or Maidenhill.
- 55. The increased number of primary denominational (Catholic) places in Newton Mearns would meet the demands for catchment places in this area. The proposal, as noted in the preceding section, gives greater long-term certainty of the availability of denominational (Catholic) primary school places for current and future East Renfrewshire residents.



56. Providing two denominational (Catholic) primary schools to serve the current St Cadoc's delineated catchment, would ease pressure on indoor and outdoor facilities at St Cadoc's. St Cadoc's operates on a very busy site and as noted earlier occupancy levels are very high at 100%.
57. To accommodate P1 catchment numbers from August 2014, the ICT room was converted to a class base and some minor adaptations made to provide alternative access to ICT. In 2014 a playbarn is also to be provided to help alleviate pressure on space for PE and dining at the school.
58. As demand from the catchment grows there will be further pressure on facilities; and with an additional new school, St Cadoc's would reduce to a 2-stream school as the new school is established, thus providing access to general purpose facilities and space benefiting learning and teaching opportunities and approaches.
59. The accommodation and resources associated with the proposed new denominational (Catholic) primary school are also likely to have a positive impact on the motivation, aspirations and enjoyment of children, staff and wider school community. The proposed new school would provide flexible indoor and outdoor learning spaces and would be able to respond to the demands of *Curriculum for Excellence*.
60. For pupils (staff and all building users) with additional support needs the new denominational (Catholic) primary school would be fully compliant in terms of the Equality Act 2010.
61. The increased number of prefive places in Newton Mearns would help to meet the demands of the residents in the area. Providing non-denominational preschool places in the new denominational primary school would serve to meet the specific demand for local places.
62. Additional prefive places would also build capacity across the area allowing for more opportunity to meet the demand for wraparound sessions, especially given the entitlement for 600 hours of early learning and childcare including providing an element of flexibility.
63. The increase in prefive provision in Newton Mearns should lead to more children accessing their nursery learning and care in one establishment in both their ante preschool and preschool years, thus reducing the need for additional transitions for very young children. It will also improve the transitions from nursery to primary with the aim of securing continuous and progressive learning experiences for children that build on prior learning. This would help to unify children's education and care in the centre of their parent's choice.
64. In recent years, the Education Department has given emphasis to monitoring and evaluating the transitions, as children move from preschool to primary and from primary to the secondary sector to ensure that these are smooth, and that learning is continuous and progressive. This is a key requirement of *Curriculum for Excellence*. This careful planning is also required as children move from one stage to the next in any one school. The considerable experience of department and school staff in managing transitions will ensure that the process of establishing a new denominational school is carried out in a manner which will ensure that children are not disadvantaged by the move and that continuity and progression will be maintained.

65. The transitions of children from the new denominational (Catholic) primary school and St Cadoc's Primary School to their associated secondary school St Ninian's High School would remain at a high standard, and would be unaffected by the proposal.
66. Should the Waterfoot Road site be deemed an acceptable school site, more children would be within the recommended walking/cycling distances to school and thereby benefit through improved opportunities to enhance attitudes to health and wellbeing.

*Proposed Relocation of Calderwood Lodge Primary and Nursery Class to Waterfoot Road in Newton Mearns*

67. The relocation of Calderwood Lodge Primary School to a new building would offer a better educational built environment than that currently. The suitability assessment of Calderwood Lodge indicates that the school building is currently rated as a category B (performing well but with minor problems). Assessment of the condition of the current school also indicates that it is category B (performing adequately but showing minor deterioration). Overall the internal and external facilities of a new build faith schools' joint campus would be superior resulting in the best condition and suitability ratings (A.) The new campus building would also be more energy and carbon efficient resulting in lower operational costs.
68. Accommodation and resources associated with a new build replacement Calderwood Lodge Primary and Nursery as part of a faith schools' joint campus are likely to have a positive impact on the motivation, aspirations and enjoyment of children, staff and the wider school community. At all stages, children would benefit from improved resources including ICT within flexible and fit for purpose learning areas.
69. As noted earlier the proposed new faith schools' joint campus would provide flexible indoor and outdoor learning spaces and would be able to respond to the demands of *Curriculum for Excellence*.
70. Relocating Calderwood Lodge Primary School into the authority at a site near its East Renfrewshire associated secondary school would help sustain and support the Jewish community. Links with East Renfrewshire sports clubs and other out-of-school organisations could be strengthened and developed, thereby supporting pupils' talents, interests and achievements. In addition more local children would be within the recommended walking/cycling distances to school and thereby benefit through improved opportunities to enhance attitudes health and wellbeing.
71. Currently Calderwood Lodge does not fully meet the requirements of the Equality Act 2010, which the new site and school would be, hence making the school more accessible to pupils, staff and the wider community.
72. The transitions of children in Calderwood Lodge Primary School to the associated secondary school Mearns Castle would remain at a high standard, and would be unaffected by the proposal. Indeed the costs associated with transporting children to their associated secondary school for transition / induction events would be greatly reduced.
73. The increase in the number of staff from the two schools working within the one campus building would be advantageous and provide more effective support to the career-long professional learning of staff. In particular it would allow staff across both schools to reflect, share and develop good practice with a stage focus, to learn together and plan for improvement. This would lead to improved quality of learning, teaching and achievement for all children.

74. The faith schools' joint campus offers a unique opportunity to deepen children's, staff and parents' understanding of each others' faiths and how they are practised. The informal consultation also highlighted a number of opportunities and benefits that the faith schools' joint campus would afford including joint activities and events such as sports teams, charity fundraising and after school clubs.
75. The faith schools' joint campus or the new denominational (Catholic) primary school based at Maidenhill would be designed to encourage community use. It would be expected that the facilities would be used extensively out with school hours providing benefit to the local community.
76. Education Scotland inspections (HMIE) have evaluated both Calderwood Lodge Primary and Nursery and St Cadoc's Primary as being good or better in all quality indicators with some elements rated as excellent. The most recent reports are available on-line at [www.educationscotland.gov.uk](http://www.educationscotland.gov.uk).
77. The authority supports and challenges schools to continue to improve. Following Education Scotland inspections, schools through the normal school improvement planning process, prepare an action plan indicating how they would address any main points for action identified by the inspection process. Representatives of the local authority quality improvement team follow-up these action plans to assess the extent to which schools continue to improve the quality of their work and to evaluate progress made in responding to any main points for action.
78. In 2012 Calderwood Lodge and St Cadoc's primary schools had a follow-through by the Quality Improvement team with both schools receiving a positive evaluation. The schools are continuing to be supported by the Quality Improvement team to ensure further improvement.
79. Should the proposed new faith schools' joint campus or the new denominational (Catholic) primary school be approved the department would ensure that standards and quality would continue to improve for all learners.
80. The Education Senior Manager (Quality Improvement) and the Quality Improvement team would work with the senior management teams in the affected schools to manage the establishment of the new denominational primary and the relocation of Calderwood Lodge Primary. Officers and school staff would work with pupils and parents/carers to ensure that the transfer of pupils would be carefully planned and children would be appropriately supported through the transition. The department is recognised as having excellent quality management procedures and practices and the Director of Education is confident that the establishment of the faith schools' joint campus would be successfully implemented with no detriment to the quality of education delivered.
81. The Education Department considers that the proposals would not have an adverse impact on any child or staff member in terms of age, gender, religion, race, and disability. Every child and staff member who attends/ works in Calderwood Lodge and St Cadoc's, whatever their background, nationality, or needs, would be given support to participate in the school curriculum and activities during the relocation of Calderwood Lodge and establishment of the new denominational (Catholic) primary. The department and schools have been successfully evaluated in terms of equality and fairness and meeting learners needs.
82. An equality impact assessment will be undertaken as part of the consultation exercise. In carrying out this assessment the department will take account of (or address) any

equality issues raised as part of the consultation process. The equality impact assessment will be included in the consultation results response document.

## IMPLICATIONS OF THE PROPOSAL

### *Transfer to Secondary School*

83. There would be no change to admission arrangements for St Ninian's High School. St Ninian's High School delineated catchment area would not change under this proposal. Placing request priorities would be as is shown in Appendix 7.
84. Although there is a need to increase primary denominational (Catholic) places in the area, there are sufficient places at St Ninian's High School to meet catchment places. St Ninian's High School has an S1 intake equivalent to the 10-streams.
85. St Ninian's currently has three associated primary schools that serve the Eastwood area of East Renfrewshire – Our Lady of the Missions Primary (4-stream), St Cadoc's Primary (3-stream) and St Joseph's Primary School (2-stream). Currently there are 9-streams in total from the associated primary schools. The changes to the delineated catchment and placing request priorities for St Ninian's have allowed East Renfrewshire Council Education Department to manage places effectively, ensuring that all catchment pupils are guaranteed an S1 place.
86. Once all catchment children have been allocated an S1 place at St Ninian's High School, placing requests are considered based on the priorities listed on the Council website: <http://www.eastrenfrewshire.gov.uk/index.aspx?articleid=1824>
87. If a change to the St Cadoc's delineated catchment area was ultimately approved, the additional new denominational (Catholic) primary would be associated with St Ninian's High School, alongside the current associated primary schools namely St Cadoc's, Our Lady of the Mission's and St Joseph's.
88. The proposed new denominational (Catholic) primary would be a 2-stream school (with prefive provision) and St Cadoc's primary would also be reduced to a 2-stream school. Based on known current and future planned residential developments, this 4-stream provision would meet the demand for denominational (Catholic) primary schooling in Newton Mearns. In time, as the then four denominational (Catholic) primary schools in the Eastwood area reach their maximum places, there would be 10 East Renfrewshire primary streams associated with St Ninian's High School.
89. In 2011, the Education Committee approved changes to the delineated catchment of St Ninian's, its associated primary schools and the priorities for granting placing requests to the school. Based on the current admission arrangements, the school has a large number of pupils admitted through placing requests. (At present there are some pupils in S4 to S6 who were admitted under the former admission arrangements as having a first priority to a place.) As demand for catchment places increases, there will be a corresponding decrease in the number of places made available for placing requests. As a result, St Ninian's will be able to accommodate additional catchment pupils as a consequence of those known planned housing developments.
90. It is acknowledged that an increase from 9-streams to 10-streams associated with St Ninian's to meet the demand for East Renfrewshire catchment Catholic primary places would result in fewer places being made available for entry through placing requests

places to St Ninian's. It should be noted, like all education authorities, East Renfrewshire has a statutory duty to provide sufficient pupil places for its resident population.

91. The proposed LDP makes provision through its Action Programme for review of the LDP. Options will continue to be explored with any necessary changes to the school estate taking account of developments and policy in the Eastwood area post 2025.
92. Pupils are admitted to Calderwood Lodge Primary through making a successful placing request. There would be no change to the current placing request priorities for Calderwood Lodge Primary.
93. Calderwood Lodge would still be associated with Mearns Castle High School and the existing transfer arrangements would continue i.e. pupils from Calderwood Lodge who live within East Renfrewshire would automatically transfer to Mearns Castle High School. Parents/Carers of children living out with East Renfrewshire must make a placing request for their child(ren) to attend any East Renfrewshire secondary school.

#### *Prefive Provision*

94. In establishing the proposed non-denominational nursery class associated with the new denominational (Catholic) primary school, the 'catchments' for Hazeldene Nursery School and Mearns Primary Nursery Class would be reviewed to take account of the additional prefive places in the area. The Department plans to reorganise prefive provision and allocation across the whole authority on a community basis to recognise locality and neighbourhoods. This would be subject of a separate future consultation.

#### *Traffic Management*

95. Should the Waterfoot site be deemed suitable and the consultation proposal gain subsequent approval, consideration would be given to the general road layout and school entrance to mitigate and minimise any increased traffic congestion around the site at the start and end of the school day. Current measures including school crossing patrols and school travel plans would be reviewed to ensure pupil safety and effective traffic management. Discussions have taken place and would continue between Education and Roads to consider wider traffic management in the locale and safe routes to schools. A Transport Impact Assessment (TA) is currently being undertaken and a School Travel Plan would be developed.
96. If the new denominational (Catholic) primary school site is in Maidenhill, appropriate consideration would be given to the surrounding road layout and school entrances to ensure that there is no traffic congestion. Measures would be put in place to ensure pupil safety and to agree appropriate traffic management. Further discussions with Planning, Roads and Education would take place to consider traffic management. A Transport Assessment Form would be required to determine whether a transport Statement or Assessment is required. A School Travel Plan would also be developed.
97. Currently 64% reside within a 1 mile radius of St Cadoc's. Establishing a new denominational (Catholic) primary school at Waterfoot Road in Newton Mearns would result in more pupils being able to walk/cycle to school with this figure increasing to 73%. This proportion would decrease to 57% if the new denominational school was based at Maidenhill.

98. Relocating Calderwood Lodge Primary School to Waterfoot Road would also reduce the number of pupils entitled to transport to school; and relocation within East Renfrewshire would enable more local children to be able to walk/cycle to school.

*Timescale, Transition, Management Arrangements and Support*

99. If the proposed faith schools' joint campus ultimately gains approval to proceed, then careful consideration would be given to managing the relocation of Calderwood Lodge and the establishment of the new denominational (Catholic) primary school. There would be support from the Quality Improvement team working with senior staff in each school to ensure that pupils are not disadvantaged during the transition. For some children who require additional support there may be the need for an extended period of transition with staff working with parents/carers to ensure that the transfer is as smooth as possible.
100. Should the Waterfoot site be deemed acceptable, it is proposed that the new faith schools' joint campus would open for session 2017-18. All staff and children in Calderwood Lodge would transfer to the new school for the start of session 2017-18. Session 2016-17 would allow both schools to support children in transition process. January 2017 would be the first registration period for P1 starting for session 2017-18.
101. Should the Waterfoot Road site not be deemed acceptable, it is proposed that the new denominational (Catholic) primary school and prefive provision would open for session 2017-18, with transition arrangements taking place during session 2016-17 and January 2017 would be the first registration period for P1 starting for session 2017-18.
102. Were the proposal to be adopted, the Education Department would move to provide appropriate staffing for the new denominational (Catholic) primary school. This process would be undertaken and managed by the Head of Education Services (Inclusion, Schools and Staff). Consultation with unions would ensure that the interests of staff are considered.
103. It is proposed that the faith schools' joint campus would comprise one building, but two schools each having their own head teacher, nursery classes and Parent Councils.
104. If the Waterfoot Site was deemed suitable as a school site and the faith schools' joint campus was approved, the Education Department would work with parents/carers, pupils, key groups / leaders of the Catholic and Jewish communities and the local community in designing and taking forward the new campus. At this stage (February 2015 onwards) the specific design brief would be agreed which would take account of the points already established (paragraph 23) and consider those expressed during this consultation.
105. Should the Waterfoot Site be deemed unsuitable and the proposal receive approval, then engagement over the design of the new denominational (Catholic) primary with prefive (non-denominational) provision would continue to take place with its stakeholders and community in establishing the new school at Maidenhill. This design development would take place from February 2015.
106. East Renfrewshire Council would be able to plan pupil places effectively and comply with its statutory duty to provide sufficient places for its resident population.
107. There are no implications for lets as no external organisations currently use Calderwood Lodge Primary School and any lets at St Cadoc's could continue, with the proposed additional school provision providing further opportunities for lets.

108. Should Calderwood Lodge move to the new faith schools' joint campus there would be a cost to board up the current school building and ensure security of the premise until a decision about the future role of the property is taken by the Council.

## FINANCIAL CONSIDERATIONS

109. The £10 million allocated within the Council's current 8-year plan will fund the 2-stream denominational (Catholic) primary with a 60:60 place for non-denominational nursery. This school would be located in the faith schools' joint campus at Waterfoot Road, Newton Mearns providing this site is deemed acceptable as a school site as part of the LDP process, Appendix 6(a). Alternatively the school site would be sited at Maidenhill in Newton Mearns. This site is indicated in Appendix 6(b).

110. An additional capital resource of £3.6m has been made available to take forward a new build Calderwood Lodge Primary School as part of a faith schools' joint campus should the site at Waterfoot Road, Newton Mearns be deemed acceptable as a school site through the LDP process, Appendix 6(a).

111. As noted in paragraphs 48(e) and 49(c), there are plans to remodel the existing accommodation at St Cadoc's Primary School to establish a nursery class (non-denominational) conditional on St Cadoc's reducing to a 2-stream primary associated with the outcome of the consultation for the new denominational (Catholic) primary school and a subsequent consultation on establishing the nursery class. Property and Technical Services have estimated that a 90:90 place nursery class would cost around £0.5 million. This would be progressed subject to noted consultations and within available resources. Revenue costs associated with operating the nursery would be part of the nursery consultation.

112. The running cost associated with the new denominational (Catholic) primary school with nursery class is estimated at £1.6 million. However an element of this would be offset by reducing staffing and resources expenditure from St Cadoc's Primary School as a consequence of its reduction to a 2-stream primary. St Cadoc's will increase from a 3-stream to a 4-stream school in the lead up to establishing the new denominational (Catholic) primary school. The variations in the running costs would be considered as part of the annual revenue budget process.

113. The running costs for Calderwood Lodge Primary School and Nursery Class are around £1 million. Should the new faith schools' joint campus ultimately be approved then the revenue budget associated with Calderwood Lodge would transfer to the campus. Including Calderwood Lodge in the new campus would result in some economies of scale given improved energy efficiency levels and through the sharing of certain facilities etc. Again this would be captured through the annual revenue budget process.

114. There would be some one-off costs associated with decant and transfer from Calderwood Lodge to its new location should the campus be approved. This is estimated at £20,000.

115. As noted in paragraphs 97 and 98, there would be changes to school transport entitlement arrangements. This would be dependent on the decision of the Reporter (i.e. site), family circumstances and pupil address. It is estimated that there may be a small increase in the cost of providing school transport, which would be met within existing resources.

116. Property and Technical Services have estimated that the cost to board up the premises at Calderwood Lodge is £10,000 and the annual cost to provide security, key holding, minimal power, rates, emergency repairs, fire-intruder and other service contracts at the closed premises is £28,025. The cost to demolish the closed building and make good the grounds is estimated at £73,000 (increasing to £284,000 should the retention of the sandstone façade be required). It is estimated that a capital receipt for the site would be £840,000 subject to vacant possession and redevelopment for residential use. However the future use of the building and its grounds would be considered as part of the Council's corporate asset management.

## CONSULTATION

117. The Council is required to formally consult on changes to a delineated catchment area, establishing new schools and changes to the admission arrangements or the relocation of any school. How this is carried out and who must be consulted is clearly set out in the Schools Consultation (Scotland) Act 2010 which came into force in April 2010.

118. This report is issued as a formal consultative document and will be made available to all interested parties. A copy of the report is available for inspection at the affected schools and at the Council's Head Office, Eastwood Park, Rouken Glen Road, Giffnock, East Renfrewshire, G46 6UG; and at the Council Offices, 211 Main Street, Barrhead, East Renfrewshire, G78 1SY. An electronic version can be accessed at the East Renfrewshire Council website ([www.eastrenfrewshire.gov.uk](http://www.eastrenfrewshire.gov.uk)).

### *Schools Affected*

119. The schools affected by the proposals are St Cadoc's Primary School, St Ninian's High School, Calderwood Lodge Primary School and Nursery Class, Hazeldene Nursery School and Mearns Primary Nursery Class.

### *Period of Consultation*

120. The consultation period will last from Wednesday 1 October 2014 to midnight on Friday 21 November 2014.

### *Interested Parties*

121. We will consult with the following:

- parents/ carers of all children/ pupils in the affected schools
- Parent Councils of the affected schools
- parents/ carers of any child(ren)/ pupil(s) expected to attend an affected school within the next 2 school years
- pupils of each affected school (in so far as the education authority considers them to be of a suitable age and maturity)
- school staff (teaching and otherwise) of each affected school
- trade unions representing staff employed in the affected schools
- the Catholic Church
- the Glasgow Jewish Representative Council



- East Renfrewshire Community Planning Partnership
- community councils
- local elected members
- local Members of Parliament and local Members of Scottish Parliament
- members of East Renfrewshire Council's Education Committee
- current community users of the affected schools
- Education Scotland

122. During the consultation period a public meeting will be held in Mearns Primary School, Hunter Drive, Newton Mearns at 7:00 pm on Wednesday 29 October. Elected members and senior officers of East Renfrewshire Council will be present to discuss the proposal and there will be an opportunity to ask questions at the meeting.

123. Note on Corrections: If any inaccuracy or omission was discovered in the Proposal Document either by the Education Department, or any person, the department would determine if relevant information has been omitted or, if there had been an inaccuracy. The Education Department would then take appropriate action which may include the issue of a correction or the reissuing of the Proposal paper or the revision of the timescale for the consultation period as appropriate. In that event, relevant consultees and Education Scotland would be advised.

#### *Responding to the Consultation*

124. East Renfrewshire Council invites all interested parties to make written representation on the proposal. Interested parties are encouraged to complete and return the response proforma that is attached (Appendix 8) and is also available on East Renfrewshire Council's website, where you can complete your response online.

125. Written responses regarding the proposal will also be accepted by letter or email. Such responses should be clear about who you are, where you live, why you are interested including your relationship with the affected schools (e.g. parent/ carer of pupil in an affected school, member of staff at an affected school, relative of a pupil at an affected school etc.) and whether or not you agree with the proposal, or have any alternative solutions or comments. Petitions will be treated as a single response.

126. Education Scotland is entitled to copies of all responses received. We would therefore advise that your personal information will be supplied to Education Scotland if they request it. Separately other interested parties may also seek sight of the responses received and accordingly you should advise if you wish your personal details withheld in respect of these requests.

127. Please send all written representation on the proposal (via the response proforma, a letter or an email) to East Renfrewshire Council, Education Department, Council Offices, 211 Main Street, Barrhead, East Renfrewshire, G78 1SY, or by email to [faithschoolsjointcampus@eastrenfrewshire.gov.uk](mailto:faithschoolsjointcampus@eastrenfrewshire.gov.uk) no later than midnight Friday 21 November 2014.

128. Education Scotland will be sent details of the consultation responses including issues raised at the public meeting and other relevant documentation. Education Scotland will then prepare and submit a report to the Director of Education within three weeks. In preparing their report Education Scotland may visit the affected schools.

129. The Director of Education will report the results of this consultation exercise including the report submitted by Education Scotland, to the Education Committee on 5 February 2015. The consultation results report will be available for public inspection at least 3 weeks before that date. The report will be available at all reasonable times at Council Offices at Eastwood Park, and Barrhead Main Street, in the affected schools, local libraries and published on the Council's website.
130. Reasonable requests for alternative forms of consultation papers or response documents will be accommodated wherever possible e.g. audio support or language translations. For this support please contact Mary Hart (0141 577 3435) or email [Mary.Hart@eastrenfrewshire.gov.uk](mailto:Mary.Hart@eastrenfrewshire.gov.uk) or write to the address in paragraph 127 above.
131. The final report and the decision taken by the Education Committee will be made available on the Council's website. Printed copies of the report will be made available on request to anyone who has responded to the consultative document.

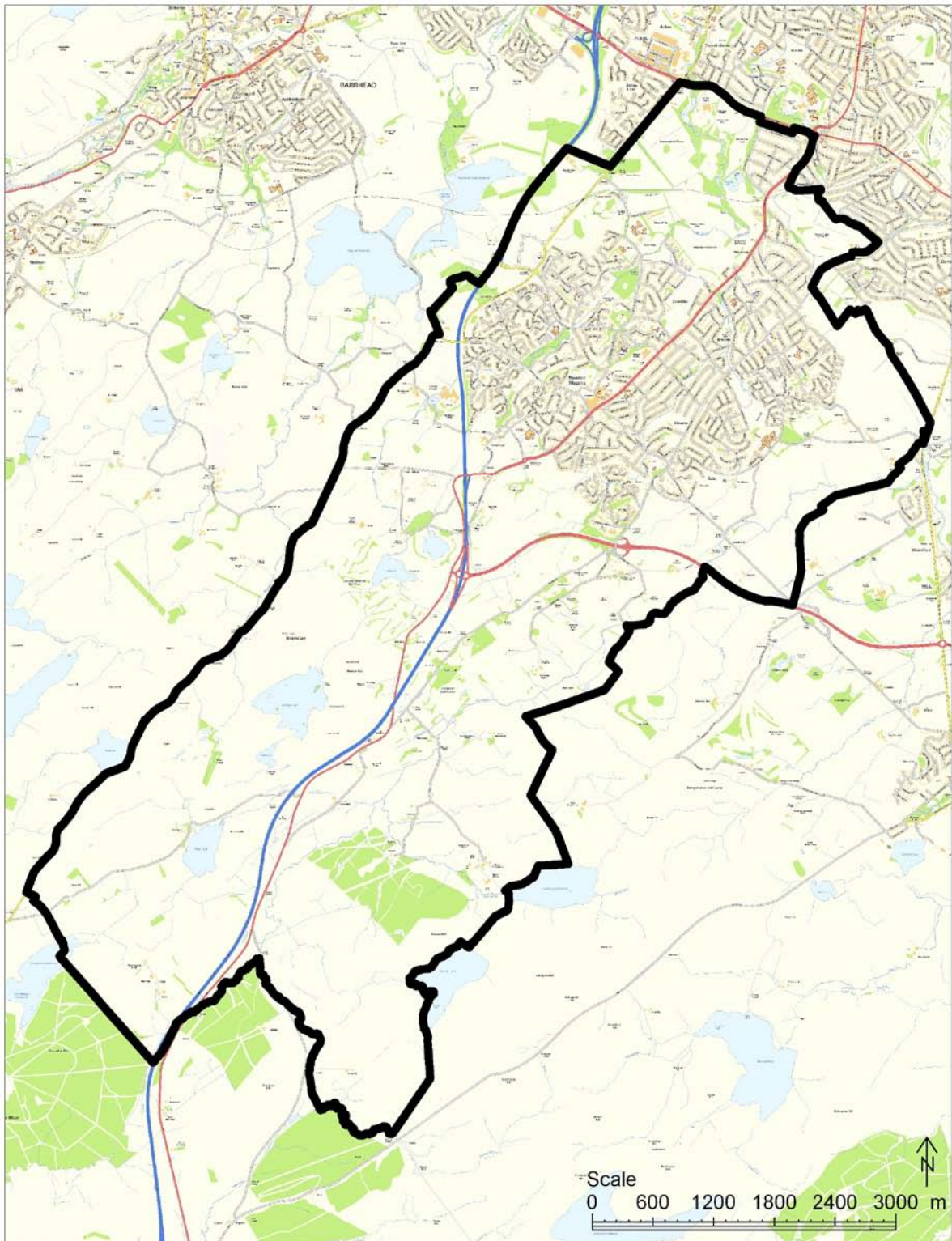
Mhairi Shaw  
Director of Education  
September 2014

**Location of St Cadoc's and Calderwood Lodge Primary Schools and  
St Ninian's and Mearns Castle High Schools**



Reproduced by permission of Ordnance Survey on behalf of HMSO. (C) Crown Copyright and database right 2014. All Rights Reserved. Ordnance Survey Licence number 100023382 2014, East Renfrewshire

**Current Delineated Catchment Area for St Cadoc's Primary School**



Delineated catchment area for St Cadoc's Primary School :February 2013

A very small number of properties shown in this delineated area have an option to attend a neighbouring school, similarly some properties outwith the delineated area may have the option to attend this school. These are mostly farms. Details are available on request.



EAST RENFREWSHIRE COUNCIL

EDUCATION COMMITTEE

23 January 2014

Report by Director of Education

REPORT ON THE EXPLORATION OF A JOINT FAITH SCHOOL CAMPUS

**PURPOSE OF THE REPORT**

1. The purpose of the report is to apprise elected members of the results of the discussions with the Catholic and Jewish communities exploring the feasibility of a joint faith school campus and of the proposed next steps.

**RECOMMENDATIONS**

2. Members are asked to:
  - a. note the positive outcome of the informal consultative exercise which considered the feasibility of a joint faith school campus;
  - b. recognise that capital resources of £3.6m would need to be made available to take forward a new build Calderwood Lodge Primary School as part of a joint faith school campus with the new denominational (Catholic) primary school, already included in the Capital Plan;
  - c. note that the site of the proposed joint faith school campus at Waterfoot Road is a modification to the Proposed Local Development Plan and the planning process, including submission to the Reporter, will ultimately determine if the Waterfoot site is agreed as a school site and so able to accommodate the proposed joint faith school campus;
  - d. if funding is made available and the Waterfoot site is deemed suitable for a school site, instruct the Director of Education to proceed with an education statutory consultation exercise in line with the Schools (Consultation) (Scotland) Act 2010 on the proposal to establish the joint faith school campus.

**BACKGROUND**

3. There is pressing need for an additional denominational (Catholic) primary school in the Newton Mearns area and provision for a site is included in the proposed Local Development Plan (LDP).
4. During the modification process of the proposed LDP, an alternative site for a school at Waterfoot Road school was put forward. In addition to building the required new Catholic primary school, this site affords the possibility of relocating Calderwood Lodge Primary School and the establishment a joint faith schools campus. The campus approach can only be considered at this site.

5. In addition to seeking the views of both communities, additional capital resources would be required to take forward a joint faith school campus, should the Waterfoot site ultimately be agreed suitable as a school site.
6. In October 2013, Education Committee approved that the Director of Education proceed with an informal consultative exercise to explore the possibility and affordability of a joint faith school campus with key groups / leaders of the Catholic and Jewish communities.
7. It should be noted that in considering a joint faith school campus, Calderwood Lodge pupils would still be associated with Mearns Castle High School and catchment pupils at the additional Catholic primary school with St Ninian's High School.

## **REPORT**

8. It was reported at the October 2013 Education Committee that initial discussions with key groups of the Jewish and Catholic faiths to sound out each community on the principles and affordability of a joint faith school campus at the Waterfoot site were very positive.
9. Following the October committee, the Director of Education was invited and attended a meeting of Calderwood Lodge Parent Forum and St Cadoc's Primary School Parent Council to hear views and help answer questions. However it was stressed that the purpose was to ascertain the views of both faith communities and what in principle would be the negotiable and non-negotiable elements in the design and working practices should such a school campus be established.
10. Key leaders of each faith and the Parent Councils of both Calderwood Lodge and St Cadoc's primary schools have discussed the matter with their communities including arranged meetings in their respective churches.
11. The Parent Council of Calderwood Lodge surveyed their parent forum. Having had a high percentage of participation from families in such, the Parent Council reported very positive views from the majority of the respondees.
12. Formal and informal feedback from bodies such as the Glasgow Jewish Representative Council and the Catholic Church have also been very positive.
13. The Parent Councils of both schools also met together and reported a lot of common ground.
14. During the last week of the school term in December, the Director of Education also arranged a joint meeting of the chaplains of both schools and representatives from their Parent Councils to hear final deliberations.
15. Feedback from both communities welcomes the opportunity and is in favour of the proposal to establish the joint faith school campus. Both communities agreed the preservation of the religious context of faith schools very important and a strong desire and their right to practise their faith at school.
16. It was understood that Calderwood Lodge followed a different school calendar and different timetable with early closure for Shabbat in winter months, which would of course be respected and preserved.
17. The need for each school to continue with its own identity and ethos is of utmost importance to both communities. The display of religious symbolism in a shared campus was considered and it was agreed that there could be some general common areas where no such symbolism was on display, but that each faith would be able to display their own religious symbolisms in their own respective parts of the campus such as their classrooms.

18. Whilst accepting the prospect of a single building for the campus, it was important to each community to maintain separate schools within the campus and pay particular attention to school entrance.
19. Each faith recognised the need to respect each other and of opportunities to share the benefits of being educated in a faith school. Areas such as playground, dining and general-purpose spaces for example sports and music could be shared. Although it was generally felt that the dining facility could be shared, the need for a kosher kitchen was recognised. Both communities also considered possible joint activities and events such as sports teams, charity fundraising and after school clubs.
20. It was agreed that some of these were details for future discussion and a well-considered building design could accommodate the needs expressed by both communities at this stage.
21. At this time it is envisaged that there would be one building with shared internal facilities and separate classroom wings where each school would undertake their main learning and teaching. Separate pupil entrances to each wing would be desirable and acceptable to each community. The external grounds would also be shared.
22. There has been a positive response by both communities and well reasoned arguments for both separate and shared areas to respect each and both faiths. It is considered that it is possible to operate two separate faith schools in a joint campus with a well-designed building, which would include prefive provision. Based on discussions, it is estimated that the additional funding to deliver the campus approach would be £3.6m on top of the £10m as estimated as required in the Council's 8-year Capital Plan for the new Catholic primary school with prefive facilities.
23. It would be mutually beneficial and viable to be taken forward to the next stage provided the Waterfoot site is determined suitable and the requisite funding is available. The next stage would involve a formal education statutory consultation exercise in Spring 2014.
24. It should be noted that there are no plans to change admission arrangements, other than to establish the new Catholic primary school and alter the existing catchment at St Cadoc's Primary School, details of which would be part of the formal consultation exercise. Calderwood Lodge would still be associated with Mearns Castle High School and the new Catholic primary school would be associated with St Ninian's High School (as well as its existing 3 primary schools).

## **FINANCIAL AND EFFICIENCY IMPLICATIONS**

25. As indicated above, the Council has included provision for a denominational (Catholic) primary school and prefive facilities within its 8-year Capital Plan. The extra funding of £3.6m to deliver instead a joint faith school campus would require additional capital resources.

## **CONSULTATION**

26. This paper reports on an informal consultative exercise carried out with the St. Cadoc's and Jewish communities of East Renfrewshire.
27. Should requisite funding be provided for the joint faith school campus and the Waterfoot site be deemed suitable for school provision, there would follow an education statutory consultation exercise in line with the Schools (Consultation) (Scotland) Act 2010. This would propose the relocation of Calderwood Lodge Primary School and

Nursery Class, change the catchment area of St Cadoc's Primary School, and establish a new Catholic primary school and prefive provision all as part of a joint faith school campus.

28. Should it not however, ultimately gain approval to proceed, there would follow an education statutory consultation exercise to establish the additional Catholic primary school and prefive provision.
29. Such formal consultation would commence in Spring 2014 where interested parties would again have the option to express their views to the proposals set out.
30. It is also noted that any new school buildings and grounds would be designed in full consultation with stakeholders to ensure all facilities best meet the needs of children, staff, parents and communities.

## RECOMMENDATIONS

31. Members are asked to:

- a. note the positive outcome of the informal consultative exercise which considered the feasibility of a joint faith school campus;
- b. recognise that capital resources of £3.6m would need to be made available to take forward a new build Calderwood Lodge Primary School as part of a joint faith school campus with the new denominational (Catholic) primary school, already included in the Capital Plan;
- c. note that the site of the proposed joint faith school campus at Waterfoot Road is a modification to the Proposed Local Development Plan and the planning process, including submission to the Reporter, will ultimately determine if the Waterfoot site is agreed as a school site and so able to accommodate the proposed joint faith school campus;
- d. if funding is made available and the Waterfoot site is deemed suitable for a school site, instruct the Director of Education to proceed with an education statutory consultation exercise in line with the Schools (Consultation) (Scotland) Act 2010 on the proposal to establish the joint faith school campus.

Mhairi Shaw  
Director of Education  
23 January 2014

### Convener Contact Details

Councillor E Green, Convener for Education and Equalities  
Councillor P O'Kane, Vice Convener for Education and Equalities

Tel: Home 01505 850455  
Tel: Mobile 07718 697115

Local Government Access to Information Act 1985

### Report Author

Fiona Morrison, Head of Education Services  
Tel: 0141 577 3229  
[Fiona.Morrison@eastrenfrewshire.gov.uk](mailto:Fiona.Morrison@eastrenfrewshire.gov.uk)

### Background Papers

1. Exploration of a Joint Faith School Campus, Education Committee, 3 October 2013
2. Proposed Modifications to the Local Development Plan, East Renfrewshire Council, 11 September 2013

### Key Words

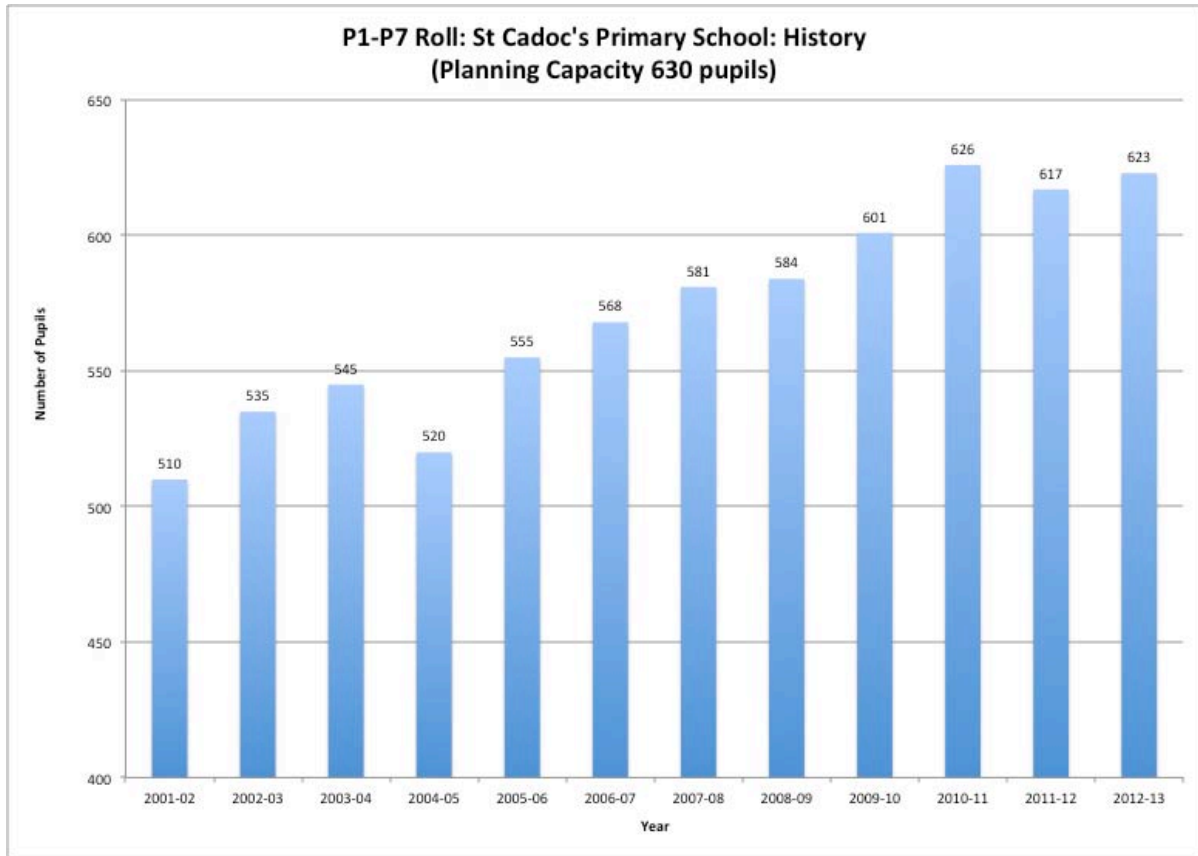
This report relates to the outcome of the discussions about the exploration of a joint faith school campus with the Catholic and Jewish communities and of the proposed next steps.

Key Words include:

Joint faith school campus, Catholic and Jewish communities, Calderwood Lodge, St Cadoc's, Waterfoot Road



**St Cadoc's Primary School: Roll History 2001-02 to 2013-14**



**St Cadoc's Primary School: Roll Projection**

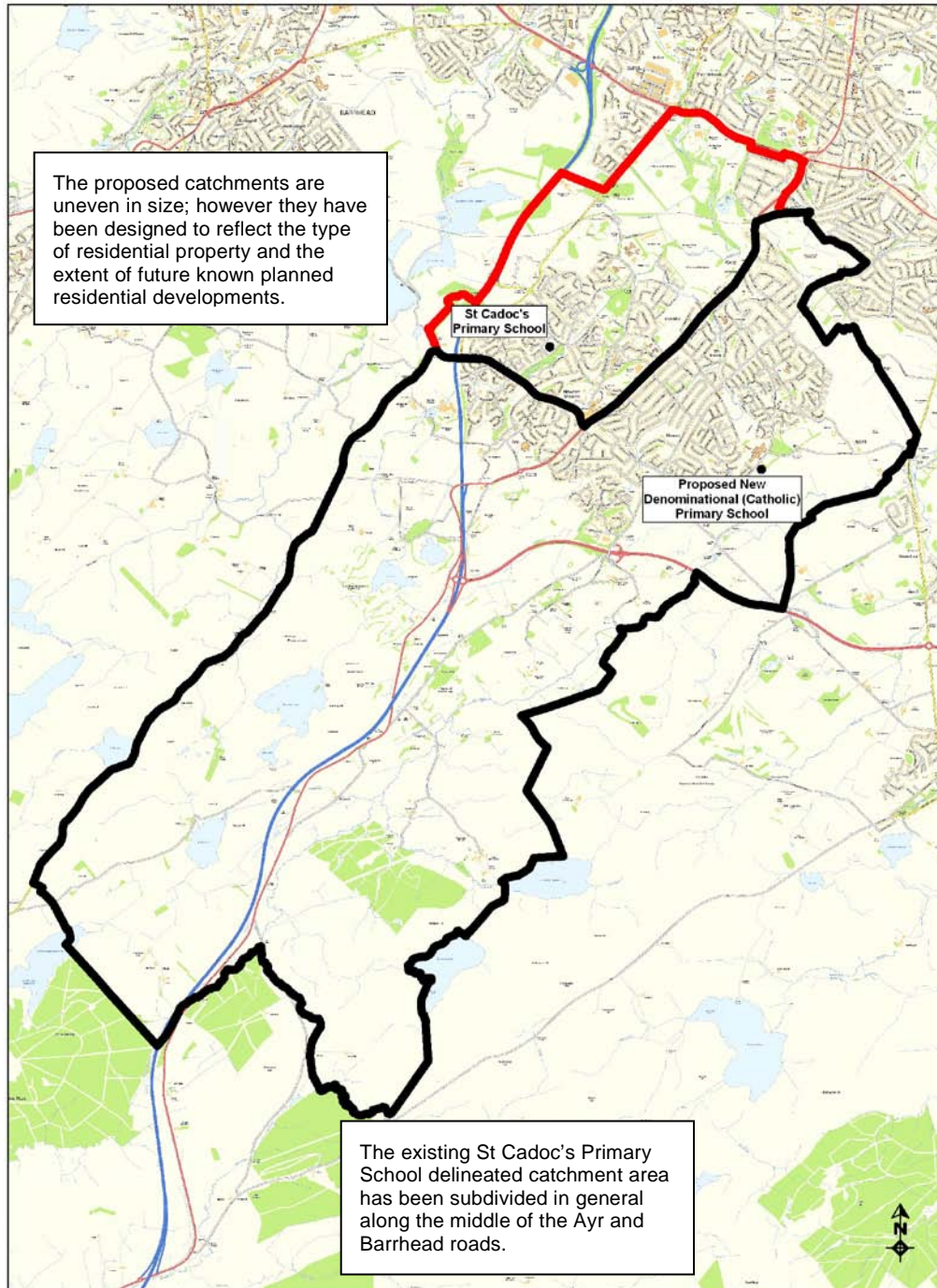
		<b>Current Planning Capacity</b>		<b>660 (2014-15 onwards)</b>						
		<b>P1 Maximum Intake</b>		<b>120</b>						
<b>Rolls by Stage</b>										
	<b>P1</b>	<b>P2</b>	<b>P3</b>	<b>P4</b>	<b>P5</b>	<b>P6</b>	<b>P7</b>	<b>P1-P7 (Excluding Housing)</b>	<b>Pupils from New Housing</b>	<b>P1-P7 (Including Housing)</b>
Sep 2014	114	89	92	87	92	99	89	662	17	679
Aug 2015	98	114	89	92	87	92	99	671	38	709
Aug 2016	98	98	114	89	92	87	92	670	57	727
Aug 2017	98	98	98	114	89	92	87	676	71	747
Aug 2018	98	98	98	98	114	89	92	687	83	770
Aug 2019	98	98	98	98	98	114	89	693	96	789

**Notes**

- The projections take account of pupils expected from known current and planned new housing within East Renfrewshire.
- The roll projection does not take account of inward migration during a school year, which is known to be around 20 pupils for St Cadoc's Primary School (depending on availability of pupil places at a given stage); and does not take account of additional future placing requests. Accordingly the projected number of pupils shown above will be further increased by inward pupil movement. Pupil numbers will also be increased post 2020 as a result of the additional housing development noted post 2020.

**Proposed New Delineated Catchment Area for St Cadoc's Primary School and Delineated Catchment Area for new Denominational (Catholic) Primary School Effective for School Session 2017-18 and Beyond**

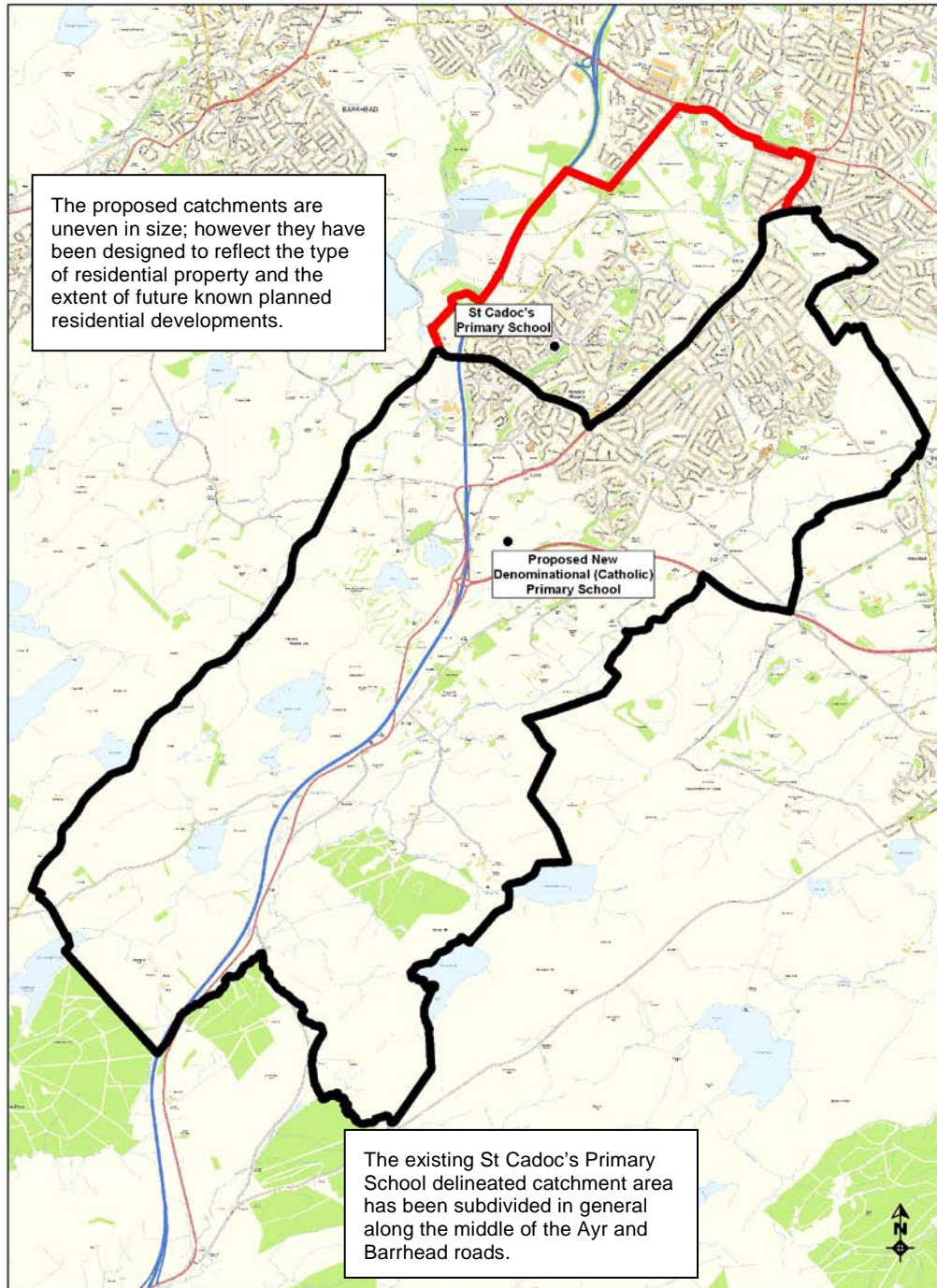
***at the Waterfoot Road, Newton Mearns Site as Part of the Faith Schools' Joint Campus Should That Site be Deemed Acceptable as a School Site***



A very small number of properties shown in these delineated areas have an option to attend a neighbouring school, similarly some properties out with the delineated areas may have the option to attend these schools. These are mostly farms. Details are available on request.

**Proposed New Delineated Catchment Area for St Cadoc's Primary School and  
Delineated Catchment Area for new Denominational (Catholic) Primary School  
Effective for School Session 2017-18 and Beyond**

***at Maidenhill, Newton Mearns Should the Waterfoot Road, Newton Mearns Site not  
be Deemed Acceptable as a School Site***



Reproduced by permission of Ordnance Survey on behalf of HMSO. (C) Crown Copyright and database right 2014. All Rights Reserved. Ordnance Survey Licence number 100023382 2014, East Renfrewshire Council.

A very small number of properties shown in these delineated areas have an option to attend a neighbouring school, similarly some properties out with the delineated areas may have the option to attend these schools. These are mostly farms. Details are available on request.

**Order of Priorities for Granting Placing Requests to St Ninian's High School  
for School Session 2018-19 and beyond**

Parents whose child(ren) do not have a first priority right to attend St Ninian's High School will require to make a request for their child(ren) to be admitted to St Ninian's High School. The following is the order of priorities for granting these placing requests:

1. Children living in the current catchment areas of St Angela's or the former St Louise's primary schools who are baptised into the Catholic faith, (evidenced by possession of a baptismal certificate), and attend either St Angela's, St Vincent's, St Cadoc's, St Joseph's, Our Lady of the Missions primary schools or the new denominational (Catholic) primary school in Newton Mearns (name to be determined).
2. A child who has a medical condition, supported with evidence from a medical practitioner, who requires facilities or support available only in St Ninian's High School.
3. Those cases where a brother or sister attends St Ninian's High School and will continue in this school during the next session.
4. Children who attend either Our Lady of the Missions, St Cadoc's, St Joseph's or the new denominational (Catholic) primary school in Newton Mearns (name to be determined) associated with St Ninian's High School according to the length of time at the associated primary.
5. Those cases where the child is part of a single parent family and it would be advantageous to the care and welfare of the child to attend St Ninian's High School.

*Note : The criteria will be applied in the order shown above. However if for any category the number of requests exceeds the number of places available, the next succeeding criteria will be used to prioritise these requests.*

---

*The current list of priorities for granting placing requests to St Ninian's High School includes the following as priority 2:*

*"For the period to session 2016-2017 (inclusive), other children living in the current catchment area of St Angela's Primary School or the former St Louise's Primary School and attending either St Angela's Primary School or St Vincent's Primary School. This criterion will be removed for placing requests made to St Ninian's High School for session 2017-2018 and beyond."*

*This has been removed from the above priorities and the remaining priorities renumbered, since Appendix 7 would apply for School Session 2018-19 onwards.*

EAST RENFREWSHIRE COUNCIL : EDUCATION DEPARTMENT

**FUTURE DENOMINATIONAL (CATHOLIC) PRIMARY SCHOOL WITH NON-DENOMINATIONAL PRE-FIVE PROVISION IN NEWTON MEARNES; AND RELOCATION OF CALDERWOOD LODGE PRIMARY SCHOOL AND NURSERY CLASS TO WATERFOOT ROAD, NEWTON MEARNES: FROM SESSION 2017-18 AND BEYOND**

**FORM FOR YOUR RESPONSE**

**ABOUT YOU**

Name:

Address:

Post Code	

Tick the box if we should keep your name and address confidential

***For Parents/Carers of children attending St Cadoc's Primary School, St Ninian's High School, Hazeldene Nursery School or Mearns Primary Nursery Class (Carer means the responsible adult with whom the young person lives)***

I live in the current catchment area

I do not live in the current catchment area

Name(s) of my child(ren):

***For Parents/Carers of children attending Calderwood Lodge Primary School & Nursery Class***

I live in East Renfrewshire

I do not live in East Renfrewshire

Name(s) of my child(ren):

***For Others (tick only one box, and complete as appropriate)***

I am a pupil at

I am a member of staff at

I am related to a young person who attends one of the affected schools

I provide care to a young person who attends one of the affected schools

I am responding on behalf of a group.

Name of group

Other (please specify)

**WHAT YOU THINK (tick only one box)**

- I agree with the proposal.
- I do not agree with the proposal.

**DO YOU HAVE A VIEW ON WHAT THE NAME OF THE NEW DENOMINATIONAL (CATHOLIC) PRIMARY SCHOOL SHOULD BE? (tick only one box)**

- Yes. Please suggest name \_\_\_\_\_
- No.

**YOUR COMMENTS ON THE PROPOSAL (tick only one box)**

- I have no additional comment to make
- My comments are written below
- I attach my comments Signed \_\_\_\_\_

Send your reply to East Renfrewshire Council, Education, \_\_\_\_\_  
Street, Barrhead, East Renfrewshire, G78 1SY, no later than midnight **Friday 21 November 2014.**

**PLEASE WRITE YOUR COMMENTS BELOW**

The reason(s) I have for reaching my decision is/are

Any other additional comment