

# Educational benefits

## PRIMARY SCHOOL



**Get the  
benefits and  
assistance  
your family  
is entitled to**

Many families are not receiving all the financial assistance they should be as they don't know about the supports available or have been refused in the past. If you are on a low income you may be eligible for assistance even if you think you will not qualify or have never claimed before.

This includes help you may be able to get if you, or a family member, has a disability or long term health condition or if someone is an unpaid carer.

This booklet details a range of assistance available to families.

If you would like some further information about the financial assistance that may be available to you please contact us for free and confidential advice.

**Money Advice**



**& Rights Team**

**Contact us:**



**0141 577 8420**

**[mart@eastrenfrewshire.gov.uk](mailto:mart@eastrenfrewshire.gov.uk)**



# Best Start Grant

## WHAT:

The Best Start School Age Payment is a Scottish Government payment for families with children who have started school or who are about to start school. It is a payment of £252.50 for each child and you can spend this how you want, you don't need to keep receipts.

## WHO:

You can claim this payment if you are responsible\* for a school age child (see below dates) and you, or your partner, are entitled to:

- **Universal Credit**
- **Child Tax Credit or Working Tax Credit**
- **Income Support**
- **Income-Based Job Seekers Allowance**
- **Income-Related Employment and Support Allowance**
- **Housing Benefit**
- **Pension Credit**

\* If you have become responsible for a child, for example a kinship carer you might qualify for a payment even if it has already been made to someone else.

## WHEN:

When you apply depends on when your child was born:

Your Child's Date of Birth	When you can apply
Between 1 March 2016 and 28 February 2017	Between June 2021 and 28 February 2022

## HOW:

Apply online or download a claim form at [www.mygov.scot](http://www.mygov.scot) or call 0800 182 2222.



# Free School Meals

## WHAT:

The current cost of a primary school meal is £2.10 per day. If you qualify for free school meals you can save approximately £399 per year.

## WHO:

You can apply if your Child attends a school in East Renfrewshire and you receive a qualifying benefit:

- **Income-related Employment and Support Allowance**
- **Income Support**
- **Income-based Job Seekers Allowance**
- **Child Tax Credit only with a gross annual household income of less than £16,105 for 2020/2021**
- **Child Tax Credit and Working Tax Credit (with a gross annual household income of up to £7,500 for 2020/2021)**
- **Universal Credit (where your maximum monthly earned income from employment does not exceed £625)**
- **Support under part VI of the Immigration Asylum Act 1999**

## WHEN:

All school children in Primary 1 to 4 (and Primary 5 from January 2022) are entitled to a free school meal. However, we would still encourage you to apply if you meet the criteria as you may be eligible for other ad hoc payments. You can apply each school year or if your circumstances change during the school year and you meet the qualifying criteria. Closing date for all applications is 31 May 2022.

## HOW:

Apply online at

[www.eastrenfrewshire.gov.uk/free-school-meals](http://www.eastrenfrewshire.gov.uk/free-school-meals)

or contact East Renfrewshire Council to request a paper form.



# School Clothing Grant

## WHAT:

The School Clothing Grant is an annual payment of £120 towards the cost of essential school clothing for each child.

## WHO:

You can apply if your Child attends a school in East Renfrewshire and you receive a qualifying benefit. You can apply when your child starts each school year or if your circumstances change during the school year and you meet the qualifying criteria:

- **Income-related Employment and Support Allowance**
- **Income Support**
- **Income-based Job Seekers Allowance**
- **Child Tax Credit only with a gross annual household income of less than £16,105 for 2020/2021**
- **Child Tax Credit and Working Tax Credit (with a gross annual household income below £16,105 for 2020/2021)**
- **Universal Credit (where your maximum monthly earned income from employment does not exceed £625)**
- **Support under part VI of the Immigration Asylum Act 1999**
- **Housing Benefit and/or Council Tax Reduction**

## WHEN:

Closing date for all applications is 31 May 2022.

## HOW:

Apply online at [www.eastrenfrewshire.gov.uk/free-school-meals](http://www.eastrenfrewshire.gov.uk/free-school-meals) or contact East Renfrewshire Council to request a paper form.



# Scottish Child Payment

## WHAT:

The Scottish Child Payment is help towards the costs of supporting your family. It is a weekly payment of £10 and you will receive the payment every 4 weeks if your application is successful.

## WHEN:

From birth until your child reaches the age of 6, as long as you receive a qualifying benefit.

## HOW:

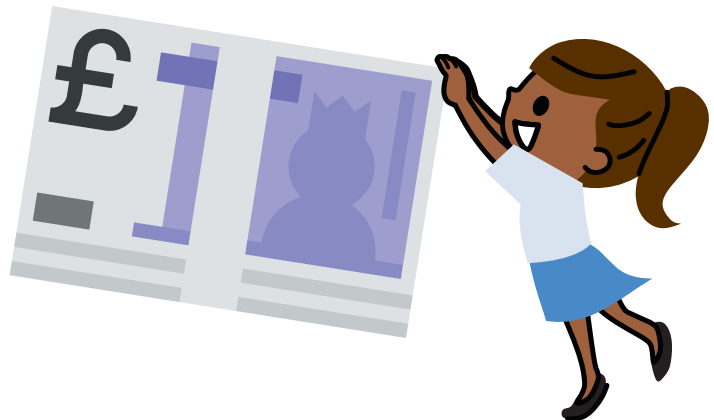
This is a Scottish Government benefit and applications can be made online at [www.mygov.scot/scottish-child-payment](http://www.mygov.scot/scottish-child-payment) or by calling Social Security Scotland on 0800 182 2222.

## WHO:

You can receive the payment for every child you look after who is under 6 years of age and you or your partner are getting certain benefits or payments.

You can apply whether you are in work or not, as long as you are getting one or more of the following benefits:

- **Income-related Employment and Support Allowance**
- **Income Support**
- **Income-based Job Seekers Allowance**
- **Child Tax Credit**
- **Working Tax Credit**
- **Universal Credit**
- **Pension Credit**



## ADDITIONAL INFORMATION

All schools have free period products available for pupils and their families. All pupils can access these and take products home.

If you have any concerns about managing the cost of school attendance, please speak to your school's Equality Coordinator and they will be happy to offer support and advice.



Contact us:



0141 577 8420

[mart@eastrenfrewshire.gov.uk](mailto:mart@eastrenfrewshire.gov.uk)



