

EXPLORE **HERE**

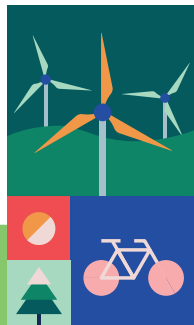
Whitelee Wind Farm Hurricane route

Whitelee offers a range of walking and cycling opportunities, from waymarked routes to self-led rides and even a network of single track mountain biking trails.

Distance	20km
Time	Walk: 4-4.5 hrs Cycle: 1.5-2 hrs
Start / Finish	Whitelee Visitor Centre
Grade	Moderate
Local Shops	Onsite Café / Eaglesham

(c) Crown Copyright and database right 2023. All Rights Reserved. Ordnance Survey Licence number 100023382 2023, East Renfrewshire Council.

**EAST
RENFREWSHIRE**





Signposting of all routes starts at turbine 40.

The Lochgoin Circuit and Blackwood Hill routes remain popular, but for those wanting a longer ride there are 3 waymarked routes which can be followed using the coloured arrows on timber posts. These routes range from 20.5 km to 34.6 km and take in a number of points of interest.

The windfarm offers an almost infinite number of self-led ride options across its 150km+ network of largely traffic free roads.

For those looking for a more technical challenge there are 4km of singletrack mountain biking trails at Brown Hill, just 700m from Whitelee Visitor Centre. The site offers blue and red graded trails, a skills loop and pump track to suit a wide range of users and skill levels.

